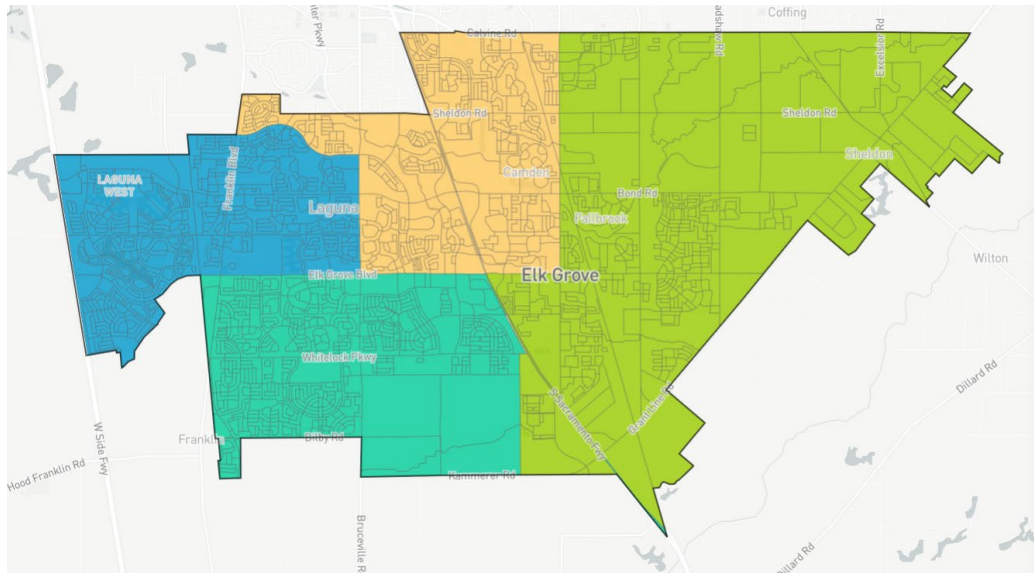
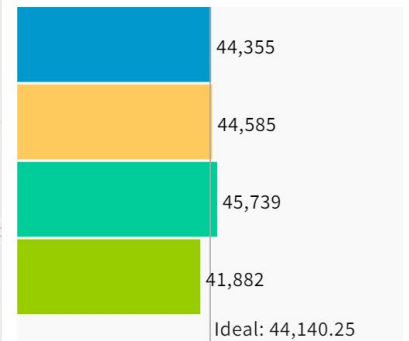


Map 12 116501 03-02-2022



Population Balance

① Uses adjusted 2020 Decennial Census population with processing by the City of Elk Grove on 2020 Blocks.



UNASSIGNED POPULATION: 0
 MAX. POPULATION DEVIATION: 5.12%
 Highlight unassigned units

Voting Age Population by Race

COMPARE: Asian VAP
 WITH: Hispanic VAP
 AND: Black VAP

	Asian	Hispanic	Black
1	28%	18.7%	11.3%
2	33.8%	18.1%	10.7%
3	44.7%	14.5%	11.6%
4	26.7%	16.8%	6.5%
Overall	33.3%	17.1%	10.1%

Voting Age Population by Race

COMPARE: White VAP
 WITH: Two or more races VAP
 AND: Native Hawaiian and Pacific

	White	Two	NH/PI
1	34.6%	5.5%	1%
2	28.9%	5.7%	2%
3	21.9%	4.8%	1.6%
4	42%	5.7%	1.2%
Overall	31.8%	5.4%	1.4%

Elk Grove

Total	176,561
Asian	32.9%
White	29.1%
Hispanic	19%
Black	9.8%
Two	6.9%
NH/PI	1.4%
Other	0.7%
Native Am.	0.3%

State

Contiguous	Good
Borders	Good
Compact	Good

Com of Int

Rural	Good
HOAs	Mid
Subdivisions	Mid
Taxation	Good

Boundary

City Sac	Good
County Sac	Mid
Study Area	Mid
Connector	Mid
Rail	Good
I-5	Good
SR-99	Good

Electoral

Connect	Mid
1-3 Excng	Good
2-4 Excng	Good
Displace	Mid
District Core	Good
Continuity	Good

Population

Dev +/-	Mid
New Growth	Concern
Built-out	Mid

Policy

Traverse 99	Mid
Boundary 99	Mid
Zero Dev	Mid

Good = ■

Mid = ■

Concern = ■