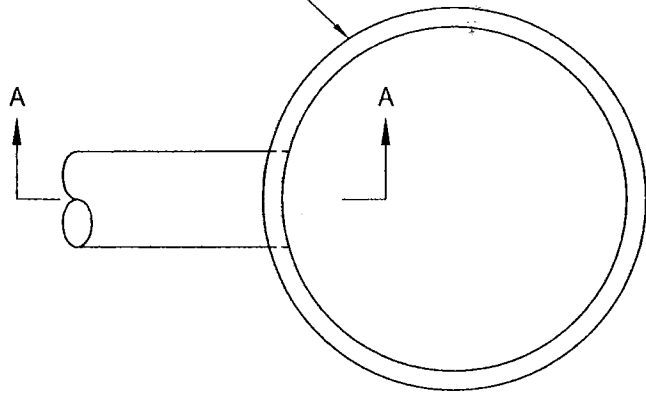
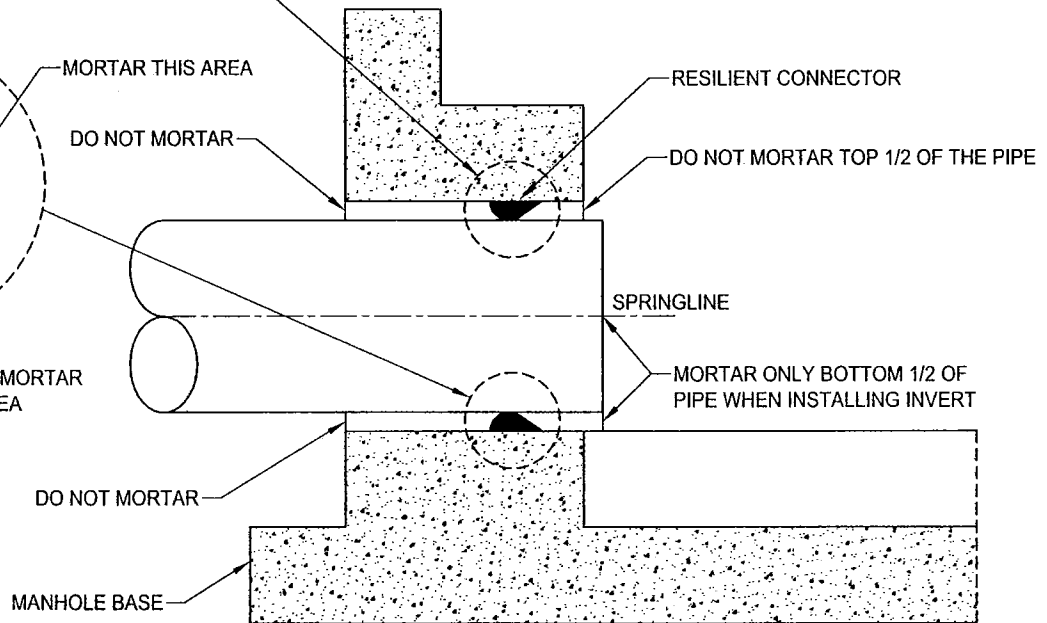
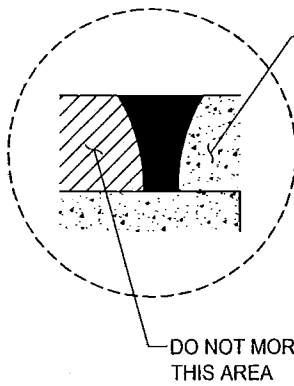
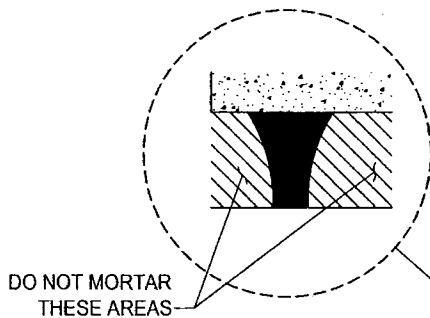


MANHOLE BASE AND BARREL SECTION. MANHOLE CONE, FRAME, AND COVER OMITTED FOR CLARITY.



**PLAN**



**SECTION A-A**

**NOTES:**

1. TO HELP CREATE A FLEXIBLE, WATERTIGHT JOINT, DO NOT PLACE MORTAR AROUND THE CONNECTOR ON THE OUTSIDE OF THE STRUCTURE OR AROUND THE TOP HALF OF THE CONNECTOR ON THE INSIDE WHEN COMPLETING THE INVERT WORK.
2. RESILIENT CONNECTORS SHALL BE A FLEXIBLE COMPRESSION GASKET OR BOOT CONNECTOR PER SECTION 39 "PRECAST CONCRETE STORM DRAIN MANHOLES OF THE CITY OF ELK GROVE CONSTRUCTION SPECIFICATIONS.
3. BOOT CONNECTORS DO NOT REQUIRE GROUTING.
4. ALL CONNECTORS SHALL MEET OR EXCEED THE REQUIREMENTS OF A.S.T.M. C-923.

DATE: 01/20/2007		NOT TO SCALE		CITY OF ELK GROVE - PUBLIC WORKS		APPROVED BY:	
				<b>FLEXIBLE PIPE TO MANHOLE CONNECTION</b>		CITY ENGINEER	
REVISION	BY	APPROVED	DATE			DRAWING NUMBER	
						<b>SD - 24</b>	