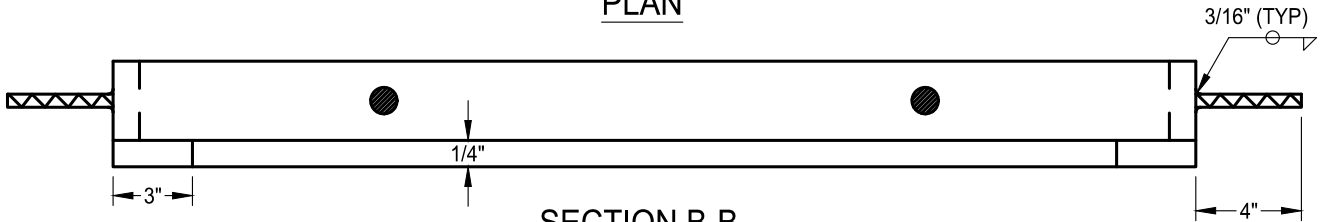
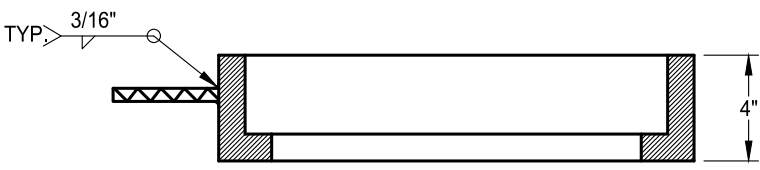


PLAN



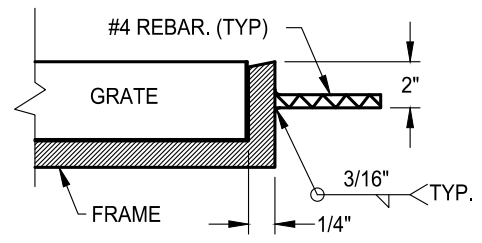
SECTION B-B



SECTION A-A

NOTES:

1. OMIT 1/2" FRAME ANCHORS OVER CENTER SUPPORT ASSEMBLY WHEN MULTIPLE FRAMES ARE USED.
2. MATERIAL: ASTM A36 MILD STEEL
3. SEE ARTICLE 50-31, "SEWER AND STORM DRAIN CASTINGS," OF SECTION 50.
4. ALL EXPOSED PARTS TO BE HOT DIP GALVANIZED PER ASTM A123, AFTER FABRICATION.



FRAME ANCHOR DETAIL

DATE: 09/22/2017		NOT TO SCALE	
REVISION	BY	APPROVED	DATE

CITY OF ELK GROVE - PUBLIC WORKS

WELDED STEEL GRATE FRAME

APPROVED BY:
Robert M. Muddoch
CITY ENGINEER

10/24/2018
DATE

DRAWING NUMBER
SD - 14

