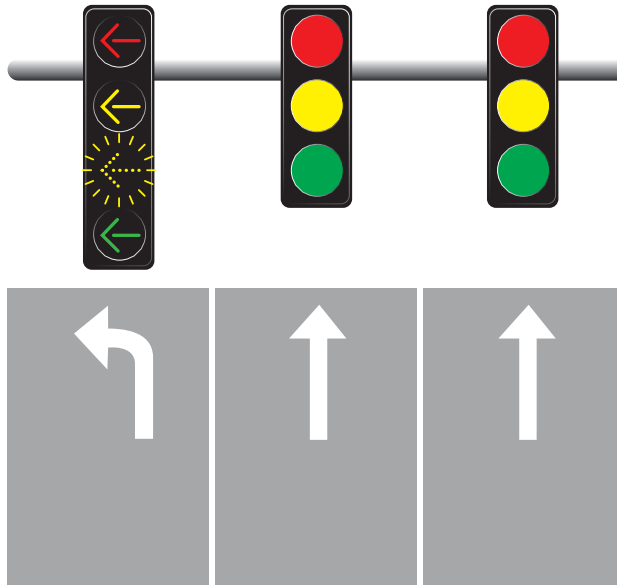


## Elk Grove's New Traffic Management Tool Flashing Yellow Arrow

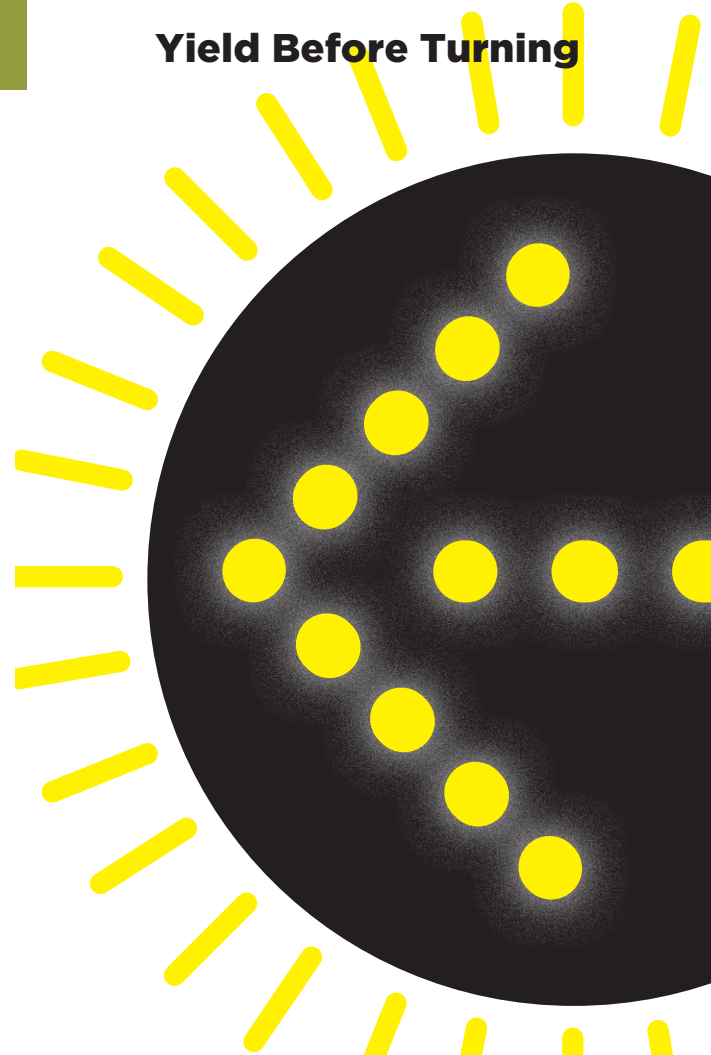
Flashing Yellow Arrows (FYA) help manage traffic congestion. This type of signal is used by several cities in the region and throughout the State. The FYA indicates when left turns are allowed after yielding to other traffic. This is often referred to as a "permissive left turn".



### Benefits of Flashing Yellow Arrows

Saves time and fuel for drivers.  
Improves traffic flow.

## Yield Before Turning



City of Elk Grove  
Public Works Department  
8401 Laguna Palms Way, Elk Grove, CA 95758  
916-478-2256

[elkgrovecity.org/flashingyellowarrow](http://elkgrovecity.org/flashingyellowarrow)



## The Flashing Yellow Left Turn Arrow

What you need to know



## What the Arrows Mean



### Steady Red Arrow

A steady red arrow means STOP. Remain stopped until the signal changes.



### Steady Yellow Arrow

A steady yellow arrow warns you that the signal is about to turn red. Do not enter the intersection. If you are within the intersection or can not stop safely, cautiously complete the turn to clear the intersection.



### Flashing Yellow Arrow

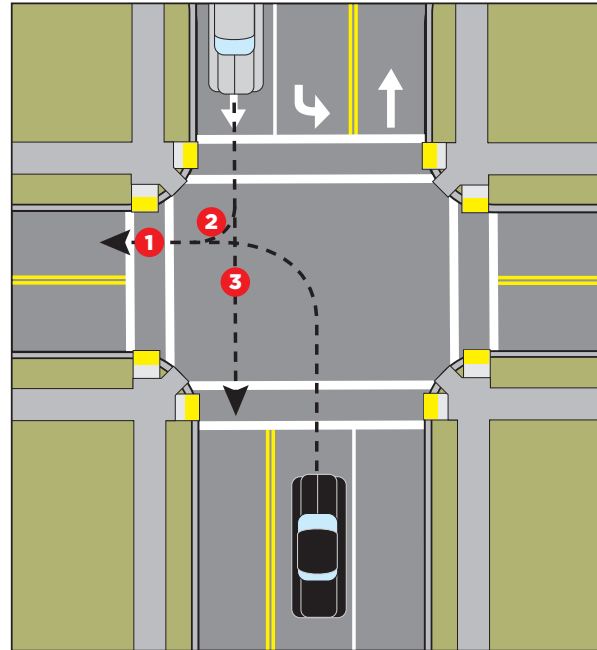
A flashing yellow arrow means you may cautiously enter the intersection only to make the movement indicated by the flashing yellow arrow. You must first yield to oncoming traffic, bicyclists, and crossing pedestrians. Carefully determine an adequate gap before making your turn.



### Steady Green Arrow

A steady green arrow means you are permitted to proceed and make the movement indicated by the arrow.

## Flashing Yellow Arrow Conflict Points



When you are turning left and see a flashing yellow arrow, the traffic coming towards you has a green light and pedestrians may have a "WALK" signal. You must **YIELD** to these potential conflicts:

- 1 Pedestrians in the crosswalk
- 2 Oncoming right turn traffic
- 3 Oncoming through traffic & bicyclists

## Pedestrian Signal and the Flashing Yellow Arrow



When the flashing yellow arrow is active, the pedestrian may have a walk symbol (and the right of way). Drivers should always **YIELD** to pedestrians.

