



Elk Grove Bicycle, Pedestrian, and Trails Master Plan Update

Virtual Community Meeting June 23 and 25, 2020

Carrie Whitlock, Kristin Parsons | City of Elk Grove

Kendra Ramsey, Emily Shandy | GHD

Gladys Cornell, Katie Durham | AIM Consulting



Agenda

- Welcome and Introductions
- Overview of BPTMP
 - Project Background
 - Plan Goals
 - Process/Implementation
- Live Polling
- Group Discussion
- Social Pinpoint Introduction



Project background



Project background

- Updating 2014 Plan
 - Emphasis on targeted 5-year implementation strategy
- Developing Transportation Impact Fee program
- Desired Outcomes
 - Connectivity within Elk Grove
 - Neighborhood permeability
 - Improve comfort on arterials
 - Preserve rural neighborhood character



Project goals



Project goals overview

- Increase bicycling and walking
- Support a culture where walking and bicycling are safe, convenient transportation options
- Promote safe behavior by all road users
- Improve connectivity and accessibility



Progress to date



Plan components

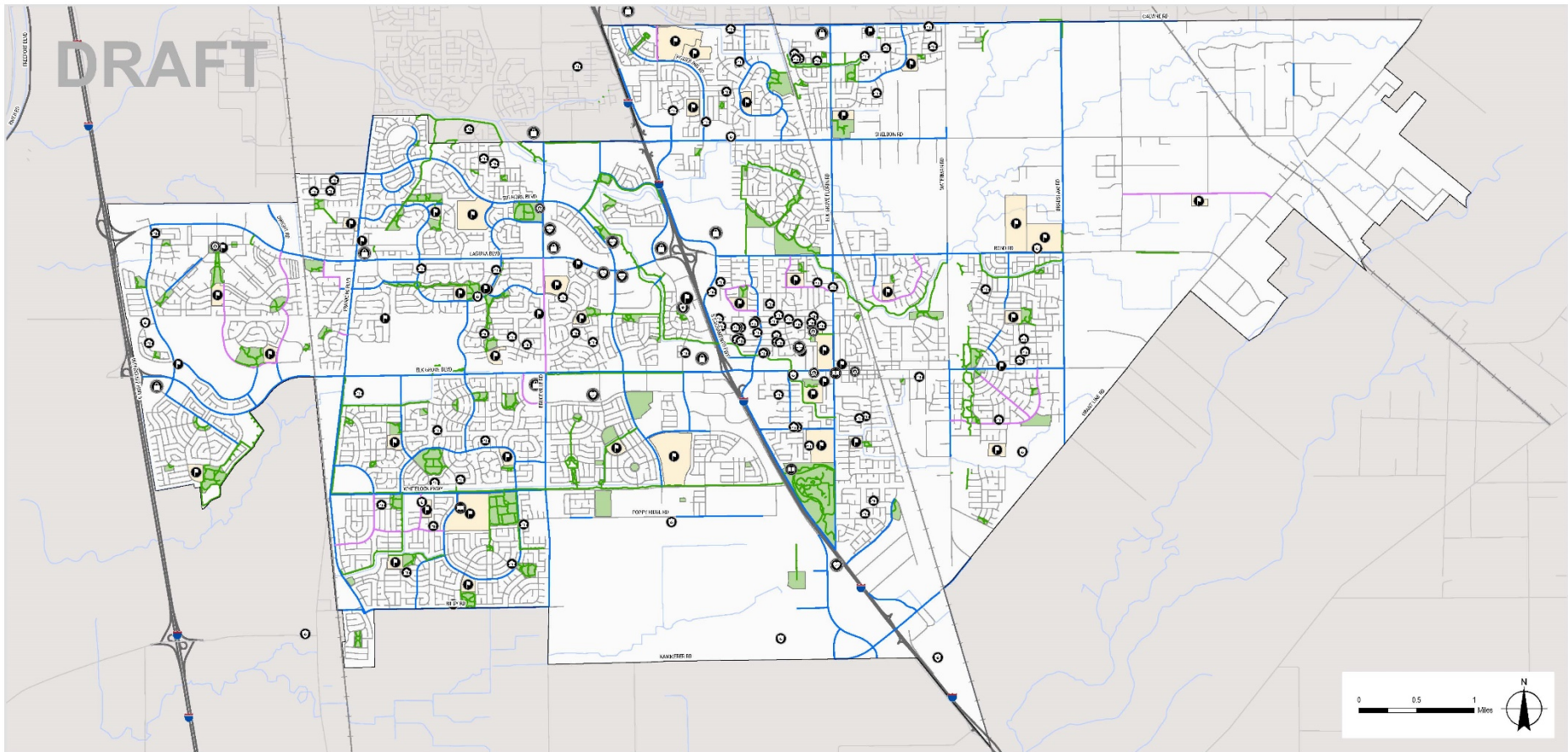
Drafts Completed:

- Introduction
- Existing Conditions
 - Current transportation behavior
 - Existing street, bicycle, and pedestrian networks
 - Safety
 - Level of Traffic Stress

Next Steps:

- Outreach
 - Workshops & Pop Ups
 - Rural Outreach
 - Online Engagement
- Recommendations
 - Projects, Programs, and Policies
- Implementation Plan
 - Cost Estimates
 - Prioritization: the First Five Years
- Design Standards

Existing facilities and destinations



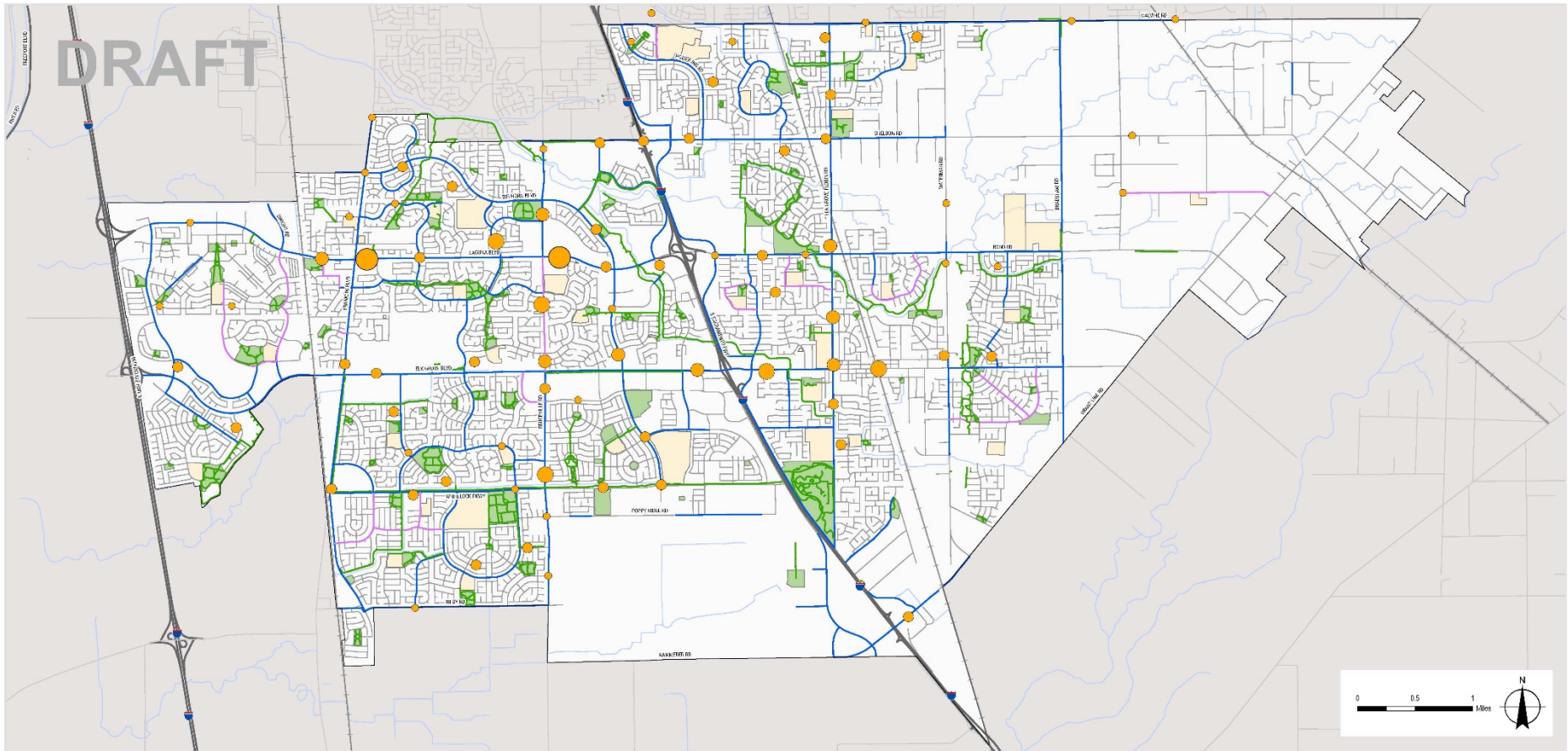
Activity Generators

Legend

Existing Bikeways	— Roads	Community Center	Childcare Facility	Boundaries
Class I Shared Use Path	— Railroads	Library/ Museum	Eldercare Facility	Park
Class II Bike Lane	— Creeks	Medical Services	Schools	City Boundary
Class III Bike Route	— Highways	City Hall	Police Department	
		School	Fire Station	
		Shopping		

FIGURE XX

Bicycle collisions



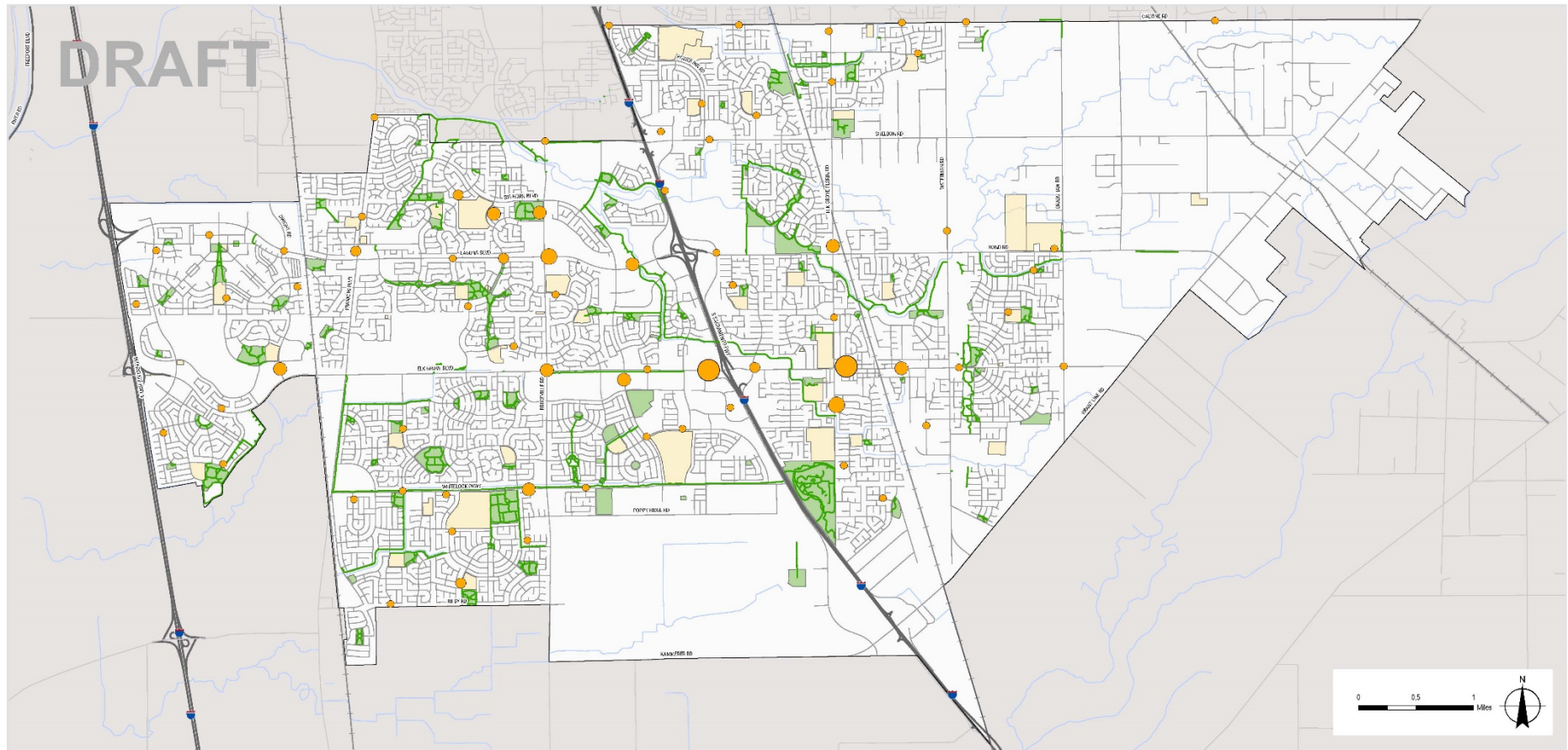
Bicycle Collisions Map



FIGURE XX



Pedestrian collisions



Pedestrian Collision Map

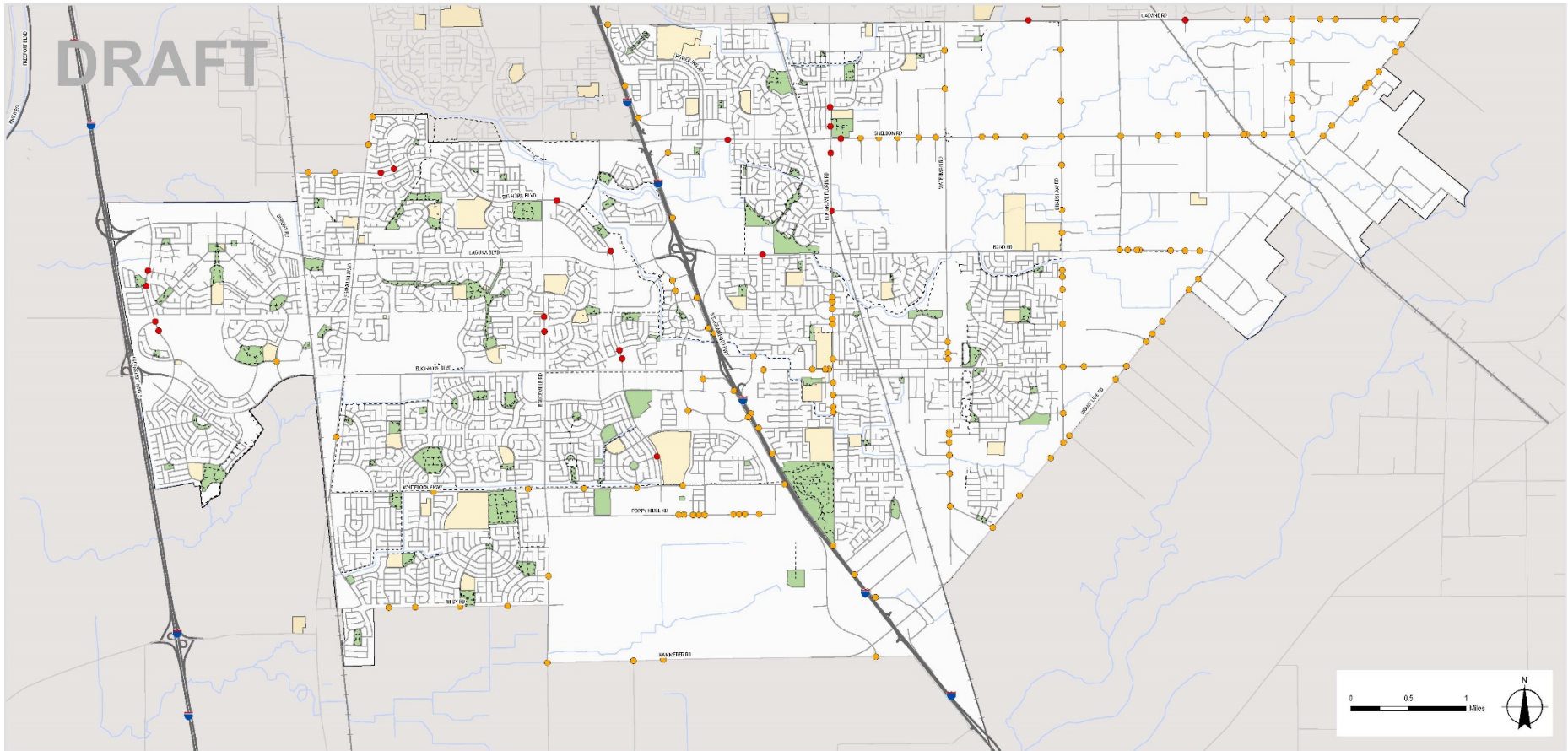
Legend

- | | | | |
|---------------------------------------------------|---------------------------|------------------|-------------------|
| Pedestrian Involved Collisions (2013-2018) | Existing Bikeways | Railroads | Boundaries |
| ● 1 | — Class I Shared Use Path | — Creeks | ■ Park |
| ● 2-3 | — Roads | — Highways | ■ Schools |
| ● 4-5 | | | □ City Boundary |
| ● 6-7 | | | |
| ● 8-9 | | | |

FIGURE XX



Higher stress crossings



Higher Stress Crossings

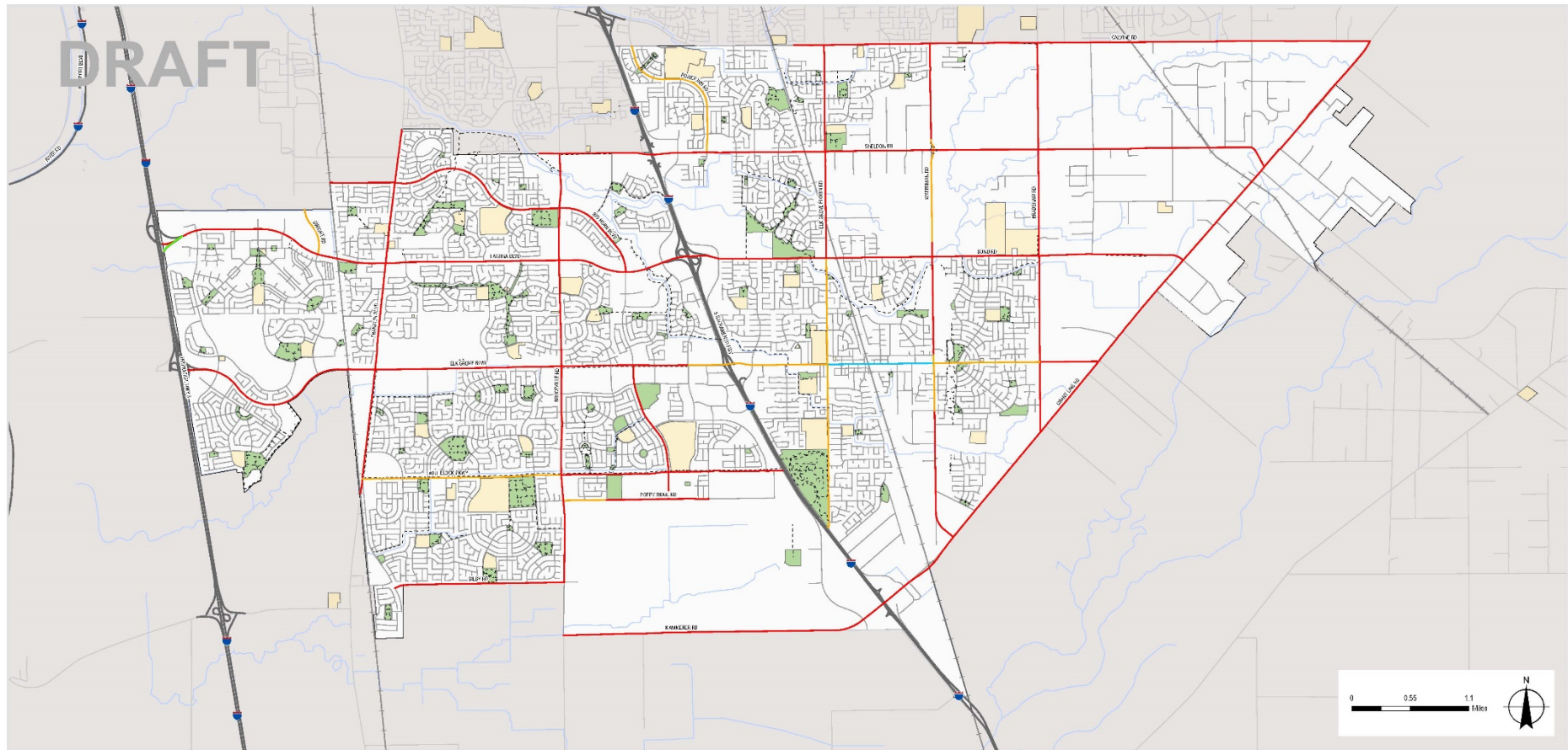
Legend

- | | | |
|----------------------|--------------------------------|-------------------|
| Intersections | ----- Class I Shared Use Paths | Boundaries |
| ● LTS Score 3 | — Roads | ■ Park |
| ● LTS Score 4 | + Railroads | ■ Schools |
| | — Creeks | □ City Boundary |

FIGURE XX



Higher stress roads



Arterial LTS

Legend

Arterial Segments		Class 1 Shared Use Paths	Boundaries	
— LTS 1 Arterial	— LTS 2 Arterial	— Roads	■ Park	■ Schools
— LTS 3 Arterial	— LTS 4 Arterial	— Railroads	 City Boundary	
		— Creeks		

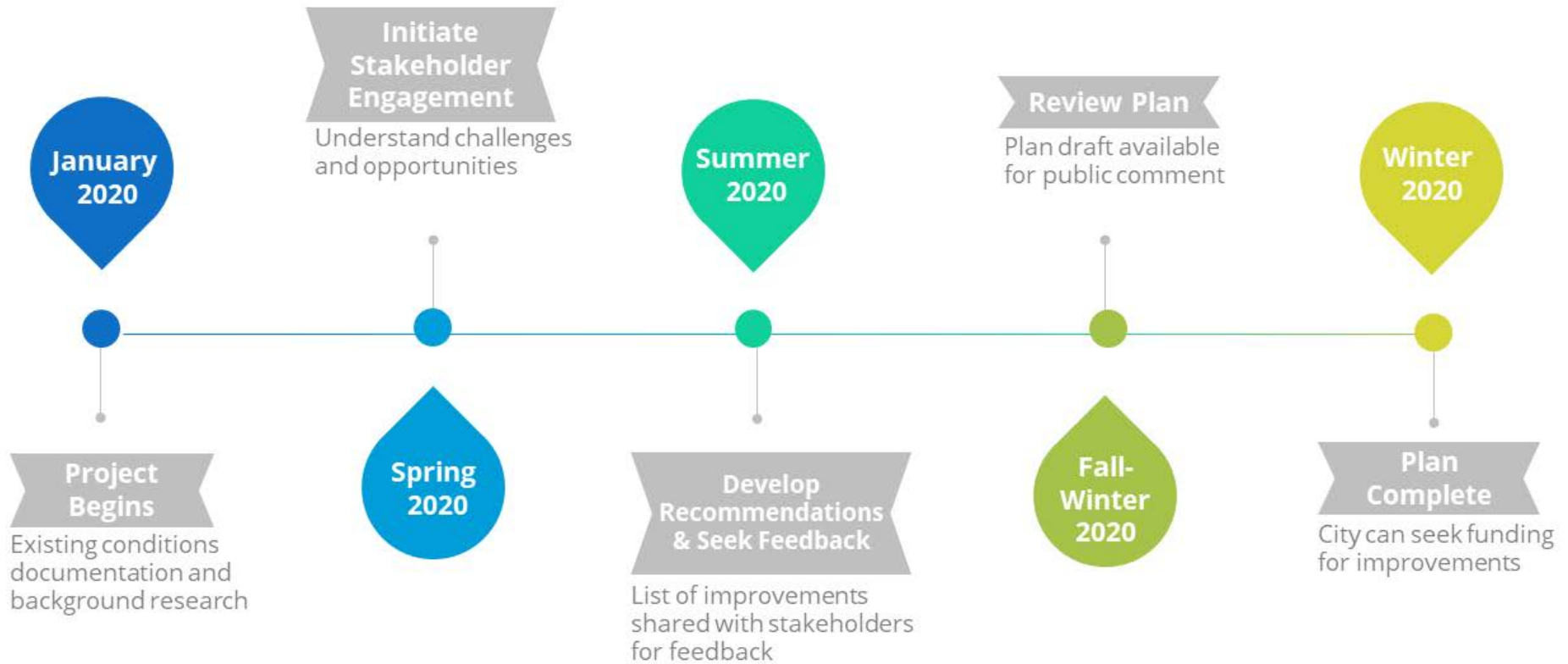
FIGURE XX



Project schedule



Project schedule



Mentimeter



Mentimeter instructions

1. Open a new browser window
2. Go to menti.com
3. Type in code 508724 to join the live polling



Please enter the code

Submit

The code is found on the screen in front of you

Live polling



Group discussion



Group discussion

What feels like it **would fit** within the context of your neighborhood?

What **doesn't fit** within the context of your neighborhood?



A



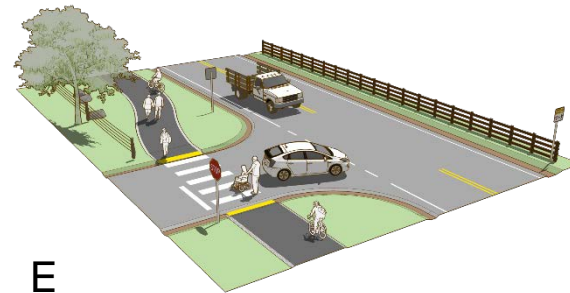
B



C



D



E



F



These are illustrations to inform our discussion, and do not represent specific recommendations for Elk Grove

A, B, and C are from the NACTO Urban Bikeway Design Guide
D, E, and F are from the FHWA Small Town and Rural Design Guide

Group discussion

In 5-10 years, what would you consider a successful outcome of this Master Plan update?



Social pinpoint



Social pinpoint

- Overview of Social Pinpoint Tool: <https://egbpt.mysocialpinpoint.com/>

The screenshot displays the Social Pinpoint web application interface. At the top, the browser address bar shows the URL <https://egbpt.mysocialpinpoint.com/elk-grove-bptmpu-pu>. The application header includes the "socialpinpoint" logo and navigation options: "Drag to comment", "Trail Concern", "Bicycle Concern", and "Pedestrian Concern". A sidebar on the left contains "Return", "ABOUT", and "ACTIVITY" links. The main map area shows a detailed view of Elk Grove, California, with various colored icons (green for Trail, orange for Bicycle, blue for Pedestrian) and numbers (1-10) indicating specific concern locations. A legend in the bottom right corner defines the icons and line styles: Trail Concern (green tree), Bicycle Concern (orange bicycle), Pedestrian Concern (blue person), City Boundary (black outline), Existing Bike Facilities (green line for Class I Shared Use Paths, blue line for Class II Bike Lanes, purple line for Class III Bike Routes). The bottom of the screen shows a Windows taskbar with the search bar and several application icons.

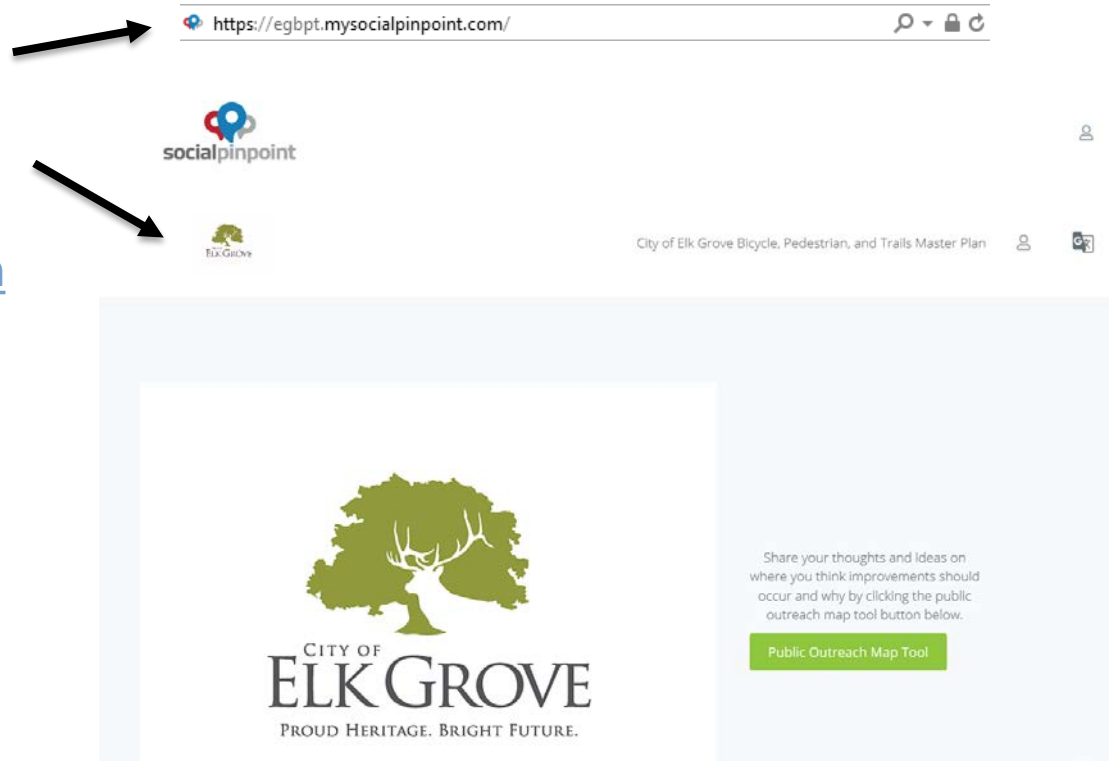


Step 1: Visit Link

- Visit link using the following web address:

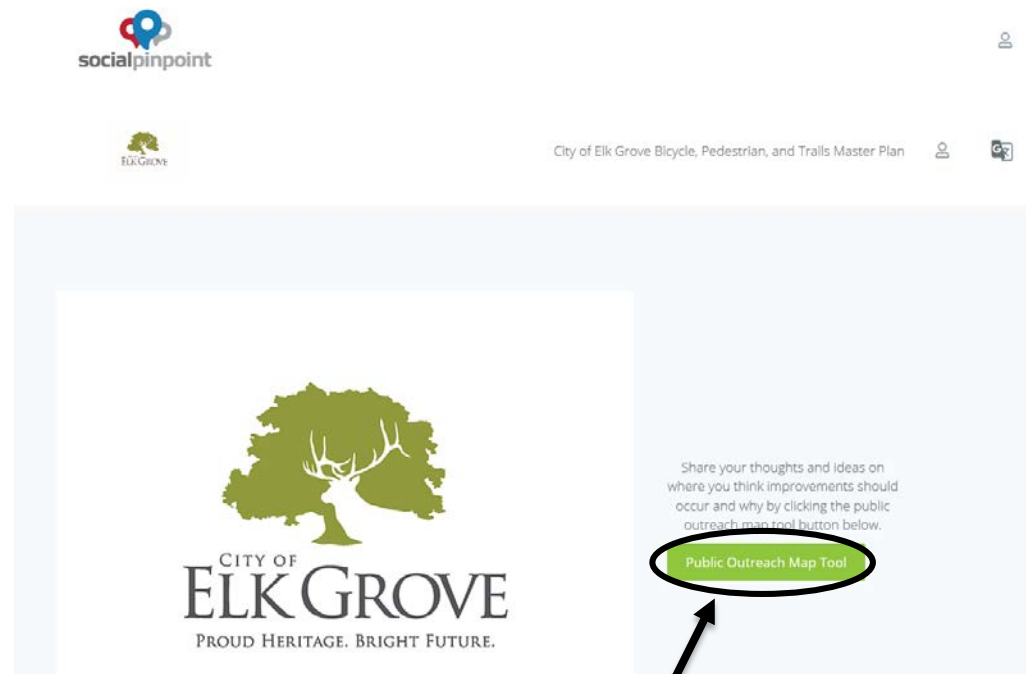
<https://egbpt.mysocialpinpoint.com/>

- The initial view of the website should look like this



Step 2: Click Public Outreach Map Tool

- Upon arriving at the home page, click on the “Public Outreach Map Tool”
- This will then take you to the comment section where you will input your comment



Click on this button

Step 3: Read Additional Instructions

- The following instructions will pop-up as a dialogue on your screen
- The additional instructions are provided in both English and Spanish
- Spanish instructions can be found when scrolling through the dialogue
- Other languages are also available for the additional instructions by clicking the Google Translate icon



socialpinpoint Public Outreach Tool

Zoom! Zoom! Zoom to an area in this map powered by Google and drag one of these icons

Drag to comment > Trail Concern Bicycle Concern Pedestrian Concern

to a point in the map to identify places that you have concerns over walking, bicycling or using the trail system. Include a short description of the issue and suggest how the City could improve it. If you would like to view this in Spanish (or other language), please activate Google Translate by clicking this icon in the top right corner of your screen.

By using the toggling buttons on the top right hand side of the screen, you can switch between road map and aerial base maps and turn on and off the layers of the existing bike network.

Roadmap Aerial

Class III Bike Routes
 Class II Bike Lanes
 Class I Shared Use Paths

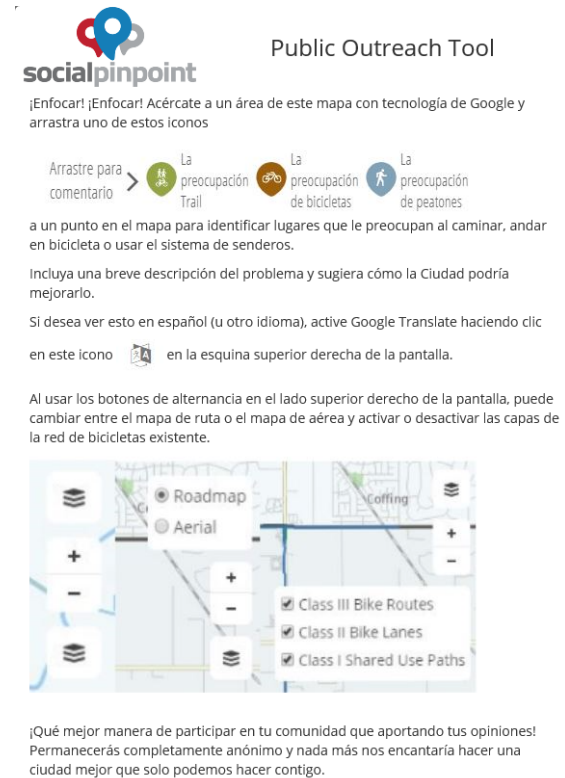
What better way to engage in your community than by contributing your opinions! You will remain completely anonymous and we would love nothing more than to make a better city which we can only do with you.

¡Enfocar! ¡Enfocar! Acércate a un área de este mapa con tecnología de Google y arrastra uno de estos iconos

Arrastre para comentar > La preocupación La preocupación La preocupación

Step 4: Click “Get Started Now”

- Scroll to the bottom of the dialogue to find the “Get Started Now” button
- The additional instructions are also shown in Spanish
- Make sure to read the instructions go gain more insight into SocialPinpoint



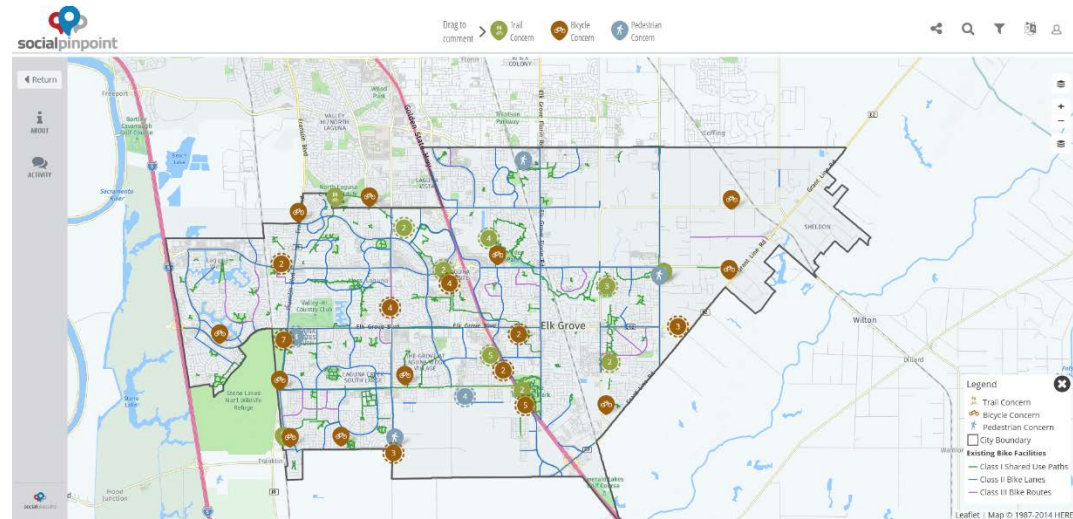
The screenshot shows the SocialPinpoint Public Outreach Tool interface. At the top left is the SocialPinpoint logo, and to its right is the title "Public Outreach Tool". Below the logo is the text: "¡Enfocar! ¡Enfocar! Acércate a un área de este mapa con tecnología de Google y arrastra uno de estos iconos". Underneath, there are three icons with labels: a green pin for "La preocupación Trail", a brown bicycle icon for "La preocupación de bicicletas", and a blue pedestrian icon for "La preocupación de peatones". Below the icons is the instruction: "Arrastre para comentario >". Further down, there are three paragraphs of text in Spanish providing instructions on how to use the tool, including how to identify problem areas on the map, add descriptions, and toggle map layers like "Class III Bike Routes", "Class II Bike Lanes", and "Class I Shared Use Paths". At the bottom of the screenshot, there is a "Get Started Now" button highlighted with a red circle.

Click on this button



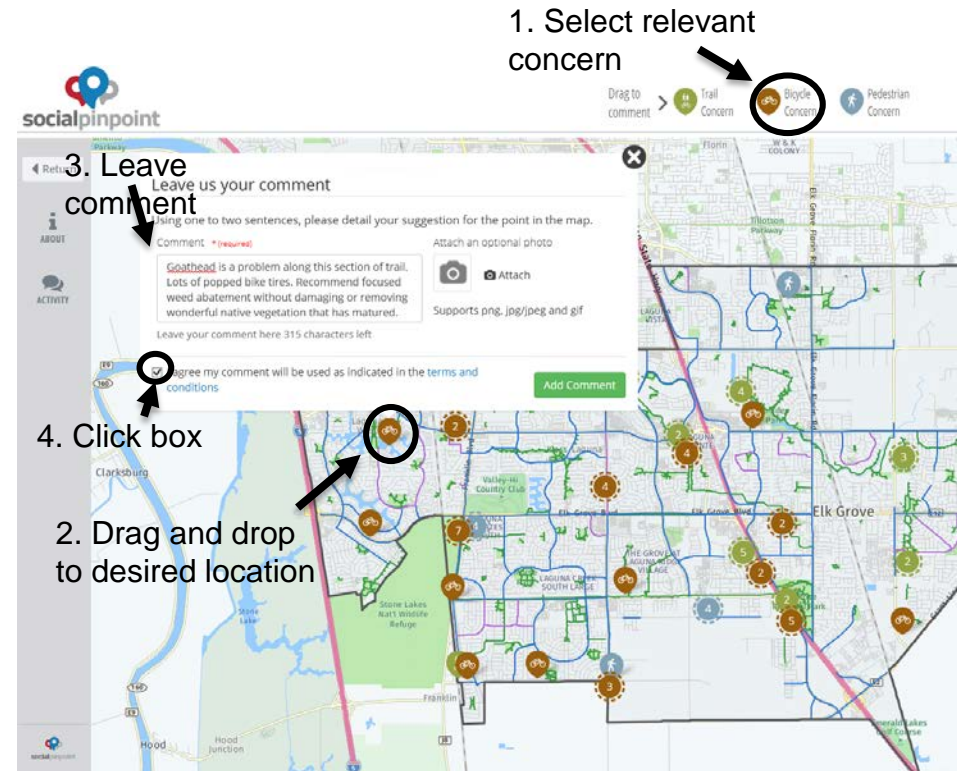
Step 5: Search for Desired Intersection

- Using the provided map, locate the desired intersection or location of interest
- Do note: Comments can only be made within the designated city boundary shown on the map



Step 6: Drag to Comment

- There are three categories of concerns listed: Trail Concern, Bicycle Concern, and Pedestrian Concern
- Select and drag the relevant icon related to your comment to desired location on map (Step 1 and 2)
- Add a description related to your comment or concern (Step 3)
- Click box reading “I agree my comment will be used as indicated in the terms and conditions” (Step 4)



Questions?

Thank you!

