

**Proposed General Plan Amendment
Safety Policies – Draft February 2021**

The following portions of Chapter 8: Services, Health, and Safety, are proposed for amendment. New text is shown in **italics**, deleted text is shown in ~~strikeout~~.

GOALS AND POLICIES: DISASTER AND EMERGENCY RESPONSE AND PUBLIC SAFETY (SAF)

GOAL SAF-1: A SAFE COMMUNITY

POLICE SERVICES

Police protection in Elk Grove is provided by the Elk Grove Police Department (EGPD), which operates from its headquarters on Laguna Palms Way and has four divisions: Field Services (Patrol), Investigative Services, Support Services, and Administrative Services. The EGPD is a public safety agency charged with the preservation of constitutional rights, maintenance of civil order, assurance of public health and safety, detection and prevention of crime, enforcement of federal and State law, and administration of the laws, Elk Grove Municipal Code, and regulations of the City.

FIRE AND EMERGENCY MEDICAL SERVICES

The CCSD provides fire protection, fire prevention, and emergency medical and rescue services to the cities of Elk Grove and Galt, as well as unincorporated areas in the region covering over 157 square miles. The CCSD Fire Department operates out of eight fire stations: six in Elk Grove and two in Galt, and a state-of-the-art training facility. The fire stations are currently located in Elk Grove, East Franklin, East Elk Grove, Laguna Creek, Lakeside, the Elk Grove-West Vineyard area and Galt.

Fire Protection

The Cosumnes Fire Department maintains an extensive system of fire stations throughout Elk Grove and a portion of the Planning Area outside the City limits. Because the City of Elk Grove does not furnish fire protection services, this General Plan does not contain policies or action items that provide for the construction or operation of fire stations or related facilities; these facilities will be constructed pursuant to the Cosumnes Fire Department’s Master Plan. This chapter instead focuses on providing for land uses to accommodate fire and other emergency facilities outside potential hazard areas, and policies and action items aimed at coordinating the City’s efforts with those of the Cosumnes Fire Department to ensure an adequate level of fire protection is available at all times in Elk Grove. The established response time goal for the department is the first unit should arrive on the scene within seven minutes of the receipt of the 911 call in the dispatch center, 90 percent of the time.

Emergency Medical Services

The Cosumnes Fire Department also provides **Emergency Medical Services (EMS)** EMS to Elk Grove. The department includes emergency medical technicians and paramedics, and operates full-time ambulance companies serving both Elk Grove and Galt.

Automatic and Mutual Aid Agreements

The CCSD is the primary fire protection and emergency medical response service within the SOIA Area. Sacramento Metropolitan Fire District (SMFD), the City of Sacramento Fire Department (SFD), and the CCSD share common jurisdictional boundaries and participate in a regional automatic/mutual aid agreement. The CCSD Fire Department also has a mutual aid agreement with the surrounding volunteer fire districts in southern Sacramento County, including Wilton, Courtland, Walnut Grove, and Herald Fire Districts. As a result of the existing automatic and mutual aid agreements the closest unit available is dispatched to an incident and fire district boundaries are not an issue when an incident occurs.

EVACUATION ROUTES

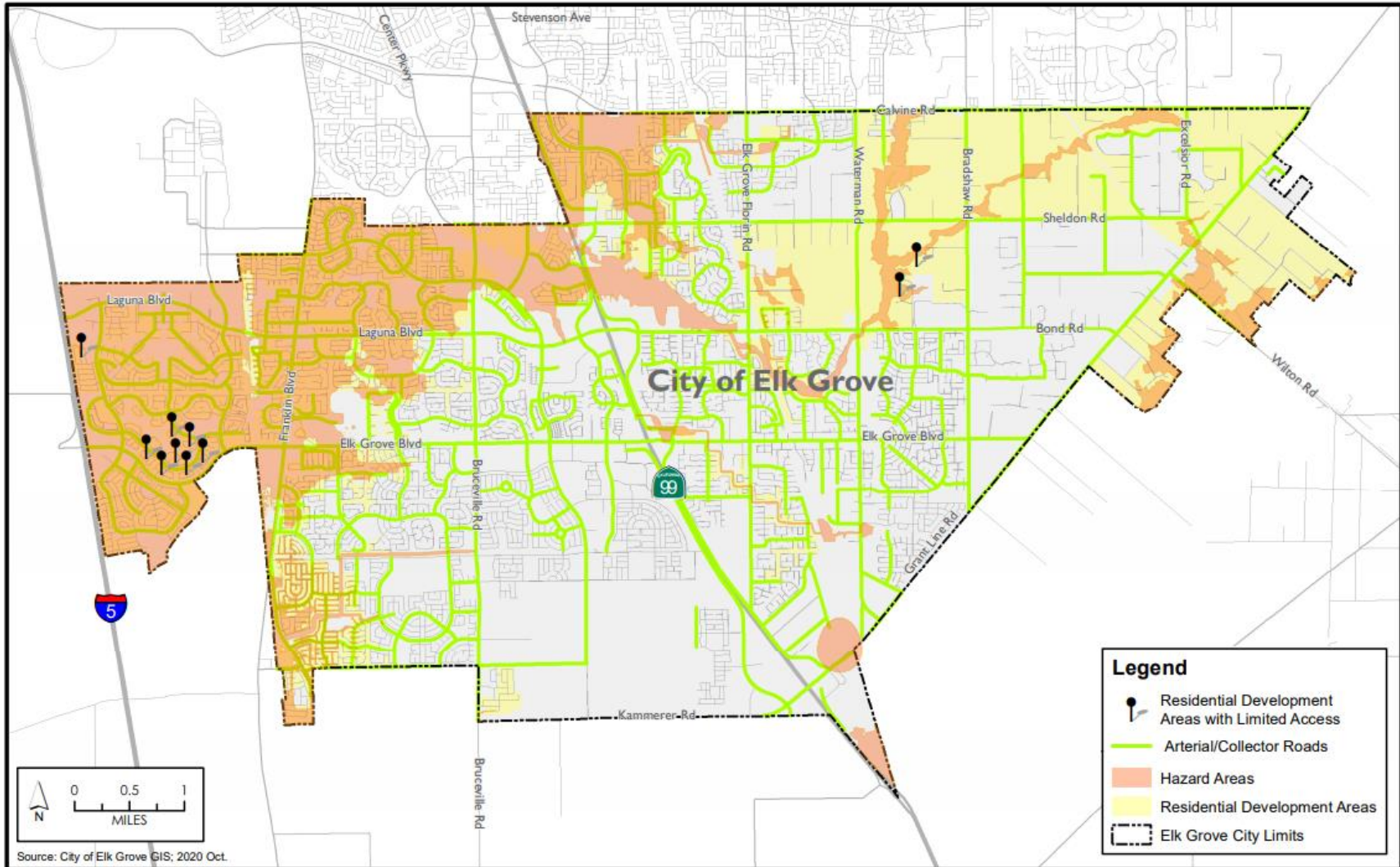
In the event of a major natural disaster or significant incident (e.g., plane crash, explosion), it may be necessary to evacuate portions of the City. The extent of the evacuation and route(s) that may be utilized depend upon the nature of the incident, anticipated extent of the impact, and available routes. Generally, the arterial and collector roadway network illustrated in Figure 3-7 (Elk Grove Roadway Classifications) will be utilized as evacuation routes.

In order to ensure that viable evacuation routes are available in residential areas of the City, the City requires (through Municipal Code Chapter 22.110) that new subdivision have adequate public access for safety and emergency egress. Specifically, for subdivisions of forty units or more, two points of public access are required unless otherwise approved by the City Engineer through a design exception. Additional design requirement in the Fire Code may also be applicable.

Pursuant to Government Code Section 65302(g)(5), the City has conducted an analysis of existing residential developments within hazard areas in the City. For purposes of this analysis, a hazard area includes both the 100-year and 200-year floodplain (see Figures 8-1 and 8-2), dam inundation areas (see Figure 8-3), fire hazard areas (see Figure 8-5), and risk probability areas (see Tables 8-1 and 8-2). Residential developments that were reviewed in the analysis focused on those that did not have a minimum of two points of access to a arterial or collector roadway as provided in EGMC Chapter 22.110. The results of this analysis are provided in Figure 8-6, Residential Development in Hazards Areas with Limited Access. The analysis shows three unique conditions as follows:

- *One site in Laguna West has a single primary point of access to Harbour Point Drive, though there is a minor connection to an adjoining subdivision adjoining the Harbour Point Drive access.*
- *Seven subdivisions in the Lakeside area of Laguna West near Elk Grove Boulevard. These are gated subdivisions. No secondary access is provided to these subdivisions, including emergency vehicle access.*
- *Two sites on the east side are subdivisions with extremely long cul-de-sacs or private drives with multiple residences, or with the potential for further subdivision. One site is located in the Rural Area and another is adjacent to the Rural Area.*

Figure 8-6:
Residential Development in Hazards Areas with Limited Access



POLICIES: POLICE SERVICES

Policy SAF-1-1: Regularly monitor and review the level of police staffing provided in Elk Grove and ensure that sufficient staffing and resources are available to serve local needs.

Policy SAF-1-2: Encourage the use of Crime Prevention Through Environmental Design (CPTED) principles in the design of projects and buildings, as well as parks and trails.

POLICIES: FIRE PROTECTION AND EMERGENCY MEDICAL SERVICES

Policy SAF-1-3: Coordinate with the CCSD Fire Department to ensure that new station siting and resources are available to serve local needs. Policies: Emergency Response Services

Policy SAF-1-4: Expand emergency response services as needed due to community growth.

Policy SAF-1-5: Address traffic congestion in areas that have been identified as being detrimental to achieving targeted response times.

POLICIES: EVACUATION ROUTES

A properly planned and implemented roadway system will facilitate the efficient movement of police and firefighting equipment and the safe evacuation of residents. Please refer to Chapter 6: Mobility, for policies related to the City's overall circulation system.

Policy SAF-1-6: Require adequate emergency access for new development projects.