



**CITY OF ELK GROVE  
CITY COUNCIL STAFF REPORT**

**AGENDA TITLE:** A Public Hearing to select a final district map for the Redistricting Project

**MEETING DATE:** March 23, 2022

**PREPARED BY**

**DEPARTMENT HEAD:** Jason Lindgren, City Clerk

---

**RECOMMENDED ACTION:**

Staff recommends the City Council select a final district map for the Redistricting Project.

This public hearing has a scheduled start time of 7:00 p.m. on March 23, 2022, in accordance with the provisions of State of California Elections Code Section 21607.1(d), which requires that public hearings related to redistricting be held at a set time if included on an agenda with substantive agenda items.

**BACKGROUND INFORMATION:**

The City of Elk Grove initiated the Redistricting Project on January 26, 2022. The City has contracted with National Demographics Corporation (NDC), and NDC will provide professional demographic services in the examination of maps selected for final consideration throughout the Redistricting Project process.

The City website serves as the clearinghouse for information on the City’s redistricting process:

[http://www.elkgrovecity.org/city\\_hall/city\\_government/city\\_council/redistricting](http://www.elkgrovecity.org/city_hall/city_government/city_council/redistricting)

On March 9, 2022, staff provided a presentation on the Redistricting Project including public outreach to date, and evaluation of district map plans submitted. Twenty-one (21) district map plans were submitted. The City Council provided direction to receive the demographic analysis of Map 11 and Map 12, as well as a variation of Map 11. The variation of Map 11 suggested moving the east-west border on Whitelock Parkway southward to Poppy Ridge Road, and then moving the north-south border on Bruceville Road eastward to Big Horn Boulevard. These three maps would be the set to make a final selection for the district map at the regular meeting of March 23, 2022, and with a final map selected, the final map would be returned at the regular meeting of April 13, 2022 for adoption.

During the public hearing of March 9, 2022, public comments were received in support of Map 21 citing the benefit that the map plan would bring together Punjabi communities into District 3. Staff noted that a concern under the evaluation of Map 21 was the displacement that would occur, in particular moving current District 2 voters into District 3 under the proposed map.

In future public hearings on redistricting, staff will target the placement of the agenda item at a consistent, set time of 7:00 p.m. to address matters related to redistricting, providing a consistent start time of redistricting discussions before the City Council throughout the process. This may require some movement of the public hearing item on any given night based on public participation and timing of other matters on the agenda.

### **ANALYSIS:**

#### **Map 21 Review**

Staff reviewed Map 21 based on public comment received, and the displacement factor remained a concern of the submittal. Focusing on only the shift of voters from District 2 into District 3, the movement would create a displacement of 6,191 population into District 3 (also, with the change of the north-south border of Elk Grove-Florin Road to instead follow the rail line shifts 389 population into District 3).

#### **Map Evaluations**

Maps 11 and 12 remain the same as presented on March 9, 2022. To maintain the sequential submittal order, the variant of Map 11, or Map 11A as noted during the meeting, is presented as Map 22. The staff evaluations are provided as Attachment 1.

Map 22 (Map 11A) remained a viable map, but it scored lower in a few evaluation criteria compared to Map 11. The two criteria downgraded were clear, identifiable borders (the inclusion of the new growth area of Laguna Ridge creates a stepping effect, and the alignment of Lotz Parkway creates another end step approaching State Route 99), and the approach to population deviation and new growth (the increase to the population in District 4 from the suggested variation makes District 4 the largest district and continues to attach new growth areas).

#### **Map Demographic Analysis**

Demographic analysis of Maps 11, 12, and 22 (11A) were conducted by NDC and will be presented during the public hearing of March 23, 2022. The maps with the demographic analysis were posted to the City website March 16, 2022 for public review. The three maps meet all legal requirements. The only concern raised was the deviation spread created under Map 22 being close to the allowed deviation permitted under federal law.

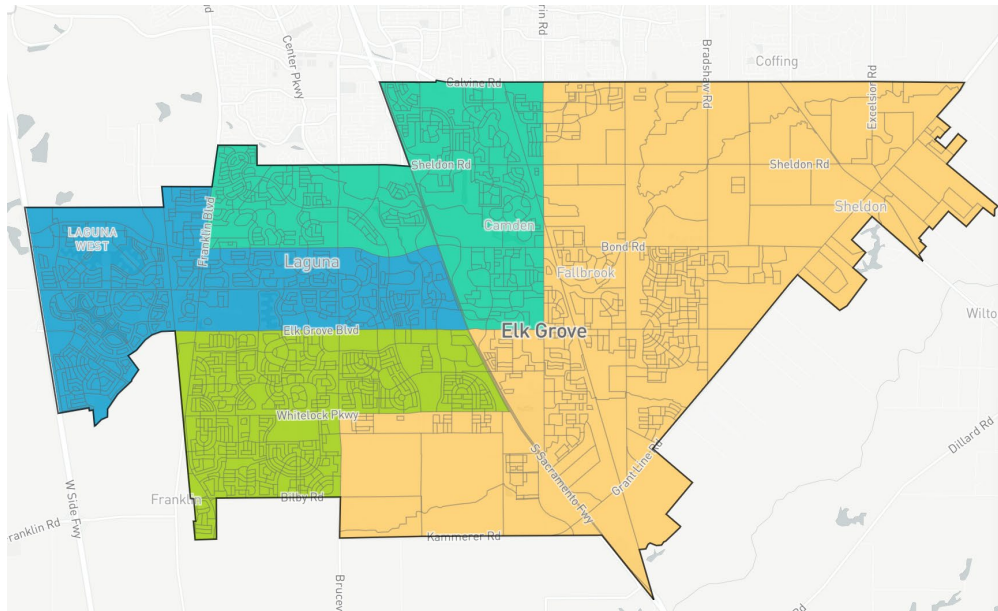
**FISCAL IMPACT:**

Support for redistricting is budgeted in the FY 2021-22 Budget of the Office of the City Clerk.

**ATTACHMENTS:**

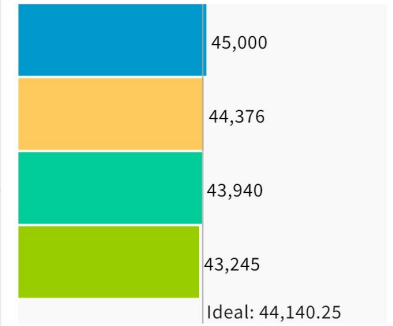
1. Staff evaluations of the finalist maps
2. Demographic Analysis of the finalist maps

Map 11 116294 03-01-2022



Population Balance

① Uses adjusted 2020 Decennial Census population with processing by the City of Elk Grove on 2020 Blocks.



UNASSIGNED POPULATION: 0  
 MAX. POPULATION DEVIATION: 2.03%  
 Highlight unassigned units

Voting Age Population by Race

COMPARE: Asian VAP  
 WITH: Hispanic VAP  
 AND: Black VAP

	Asian	Hispanic	Black
1	28.3%	18.5%	11.4%
2	27.9%	16.6%	6.9%
3	33.6%	18.2%	10.6%
4	44.6%	14.6%	11.5%
Overall	33.3%	17.1%	10.1%

Voting Age Population by Race

COMPARE: White VAP  
 WITH: Two or more races VAP  
 AND: Native Hawaiian and Pacific

	White	Two	NH/PI
1	34.4%	5.7%	0.9%
2	40.8%	5.6%	1.2%
3	29.1%	5.5%	2.1%
4	22%	4.9%	1.6%
Overall	31.8%	5.4%	1.4%

Elk Grove

Total	176,561
Asian	32.9%
White	29.1%
Hispanic	19%
Black	9.8%
Two	6.9%
NH/PI	1.4%
Other	0.7%
Native Am.	0.3%

State

Contiguous	Good
Borders	Good
Compact	Mid

Com of Int

Rural	Good
HOAs	Good
Subdivisions	Good
Taxation	Good

Boundary

City Sac	Good
County Sac	Mid
Study Area	Good
Connector	Good
Rail	Good
I-5	Good
SR-99	Good

Electoral

Connect	Good
1-3 Excng	Good
2-4 Excng	Good
Displace	Mid
District Core	Good
Continuity	Good

Population

Dev +/-	Good
New Growth	Mid
Built-out	Mid

Policy

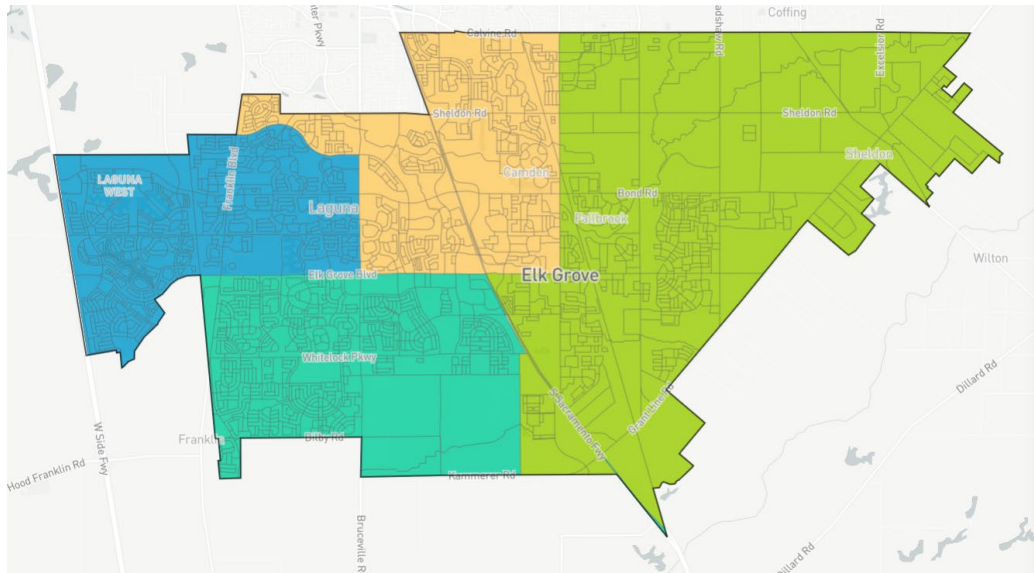
Traverse 99	Mid
Boundary 99	Concern
Zero Dev	Mid

Good = ■

Mid = ■

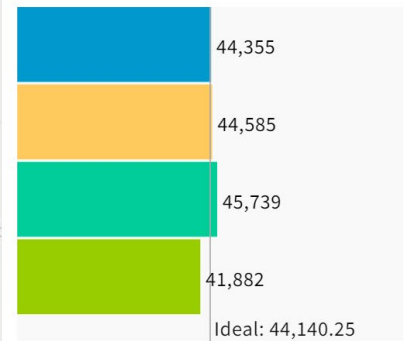
Concern = ■

# Map 12 116501 03-02-2022



## Population Balance

① Uses adjusted 2020 Decennial Census population with processing by the City of Elk Grove on 2020 Blocks.



UNASSIGNED POPULATION: 0  
 MAX. POPULATION DEVIATION: 5.12%  
 Highlight unassigned units

## Voting Age Population by Race

COMPARE: Asian VAP  
 WITH: Hispanic VAP  
 AND: Black VAP

	Asian	Hispanic	Black
1	28%	18.7%	11.3%
2	33.8%	18.1%	10.7%
3	44.7%	14.5%	11.6%
4	26.7%	16.8%	6.5%
Overall	33.3%	17.1%	10.1%

## Voting Age Population by Race

COMPARE: White VAP  
 WITH: Two or more races VAP  
 AND: Native Hawaiian and Pacific

	White	Two	NH/PI
1	34.6%	5.5%	1%
2	28.9%	5.7%	2%
3	21.9%	4.8%	1.6%
4	42%	5.7%	1.2%
Overall	31.8%	5.4%	1.4%

## Elk Grove

Total	176,561
Asian	32.9%
White	29.1%
Hispanic	19%
Black	9.8%
Two	6.9%
NH/PI	1.4%
Other	0.7%
Native Am.	0.3%

## State

Contiguous	Good
Borders	Good
Compact	Good

## Com of Int

Rural	Good
HOAs	Mid
Subdivisions	Mid
Taxation	Good

## Boundary

City Sac	Good
County Sac	Mid
Study Area	Mid
Connector	Mid
Rail	Good
I-5	Good
SR-99	Good

## Electoral

Connect	Mid
1-3 Excng	Good
2-4 Excng	Good
Displace	Mid
District Core	Good
Continuity	Good

## Population

Dev +/-	Mid
New Growth	Concern
Built-out	Mid

## Policy

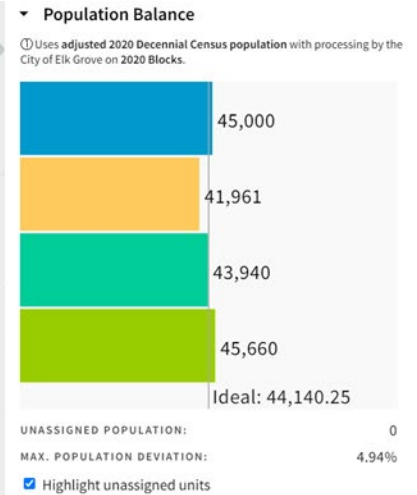
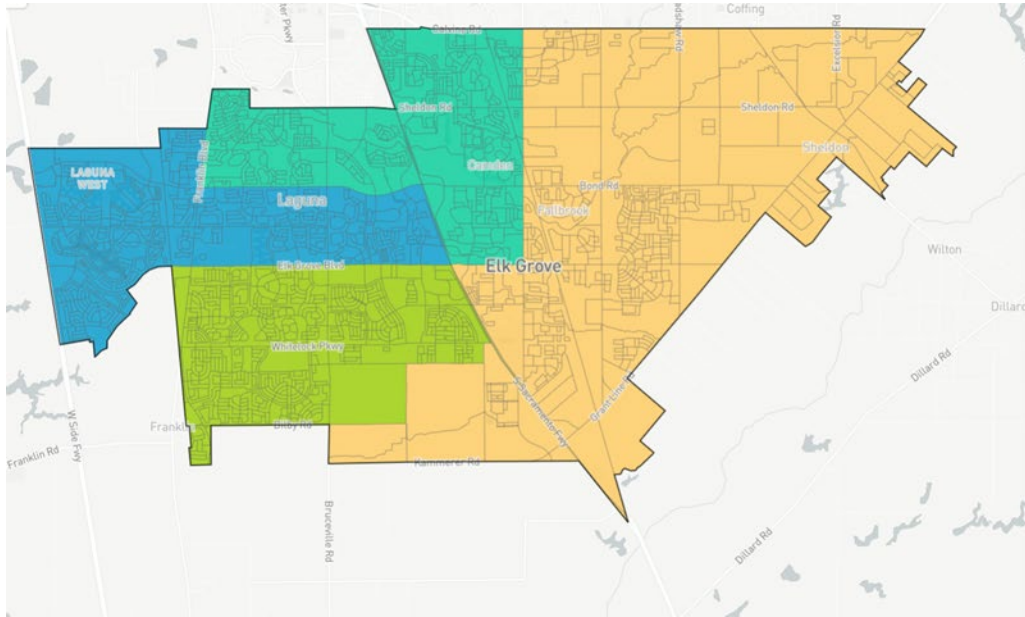
Traverse 99	Mid
Boundary 99	Mid
Zero Dev	Mid

Good = ■

Mid = ■

Concern = ■

# Map 22 118703 03-11-2022 (Revised Map 11)



## Voting Age Population by Race

COMPARE: Asian VAP

WITH: Hispanic VAP

AND: Black VAP

	Asian	Hispanic	Black
1	28.3%	18.5%	11.4%
2	26.7%	16.9%	6.6%
3	33.6%	18.2%	10.6%
4	44.8%	14.4%	11.6%
Overall	33.3%	17.1%	10.1%

## Voting Age Population by Race

COMPARE: White VAP

WITH: Two or more races VAP

AND: Native Hawaiian and Pacific

	White	Two	NH/PI
1	34.4%	5.7%	0.9%
2	41.9%	5.7%	1.2%
3	29.1%	5.5%	2.1%
4	22%	4.8%	1.6%
Overall	31.8%	5.4%	1.4%

**Elk Grove**

Total	176,561
Asian	32.9%
White	29.1%
Hispanic	19%
Black	9.8%
Two	6.9%
NH/PI	1.4%
Other	0.7%
Native Am.	0.3%

### State

Contiguous	Good
Borders	Mid
Compact	Mid

### Com of Int

Rural	Good
HOAs	Good
Subdivisions	Good
Taxation	Good

### Boundary

City Sac	Good
County Sac	Mid
Study Area	Good
Connector	Good
Rail	Good
I-5	Good
SR-99	Good

### Electoral

Connect	Good
1-3 Excng	Good
2-4 Excng	Good
Displace	Mid
District Core	Good
Continuity	Good

### Population

Dev +/-	Mid
New Growth	Mid
Built-out	Mid

### Policy

Traverse 99	Mid
Boundary 99	Concern
Zero Dev	Concern

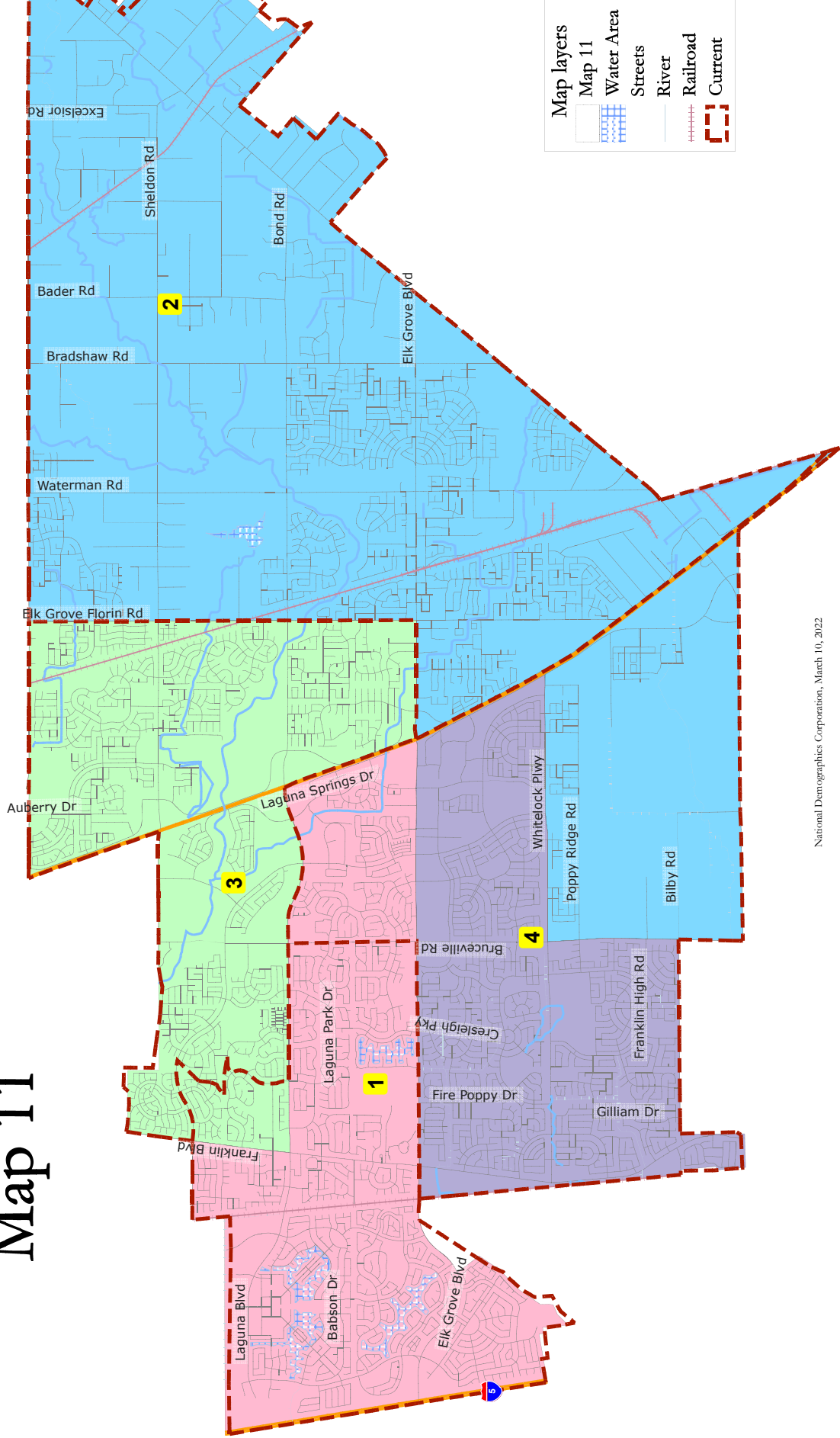
Good = ■

Mid = ■

Concern = ■

Elk Grove 2022 Redistricting

# Map 11



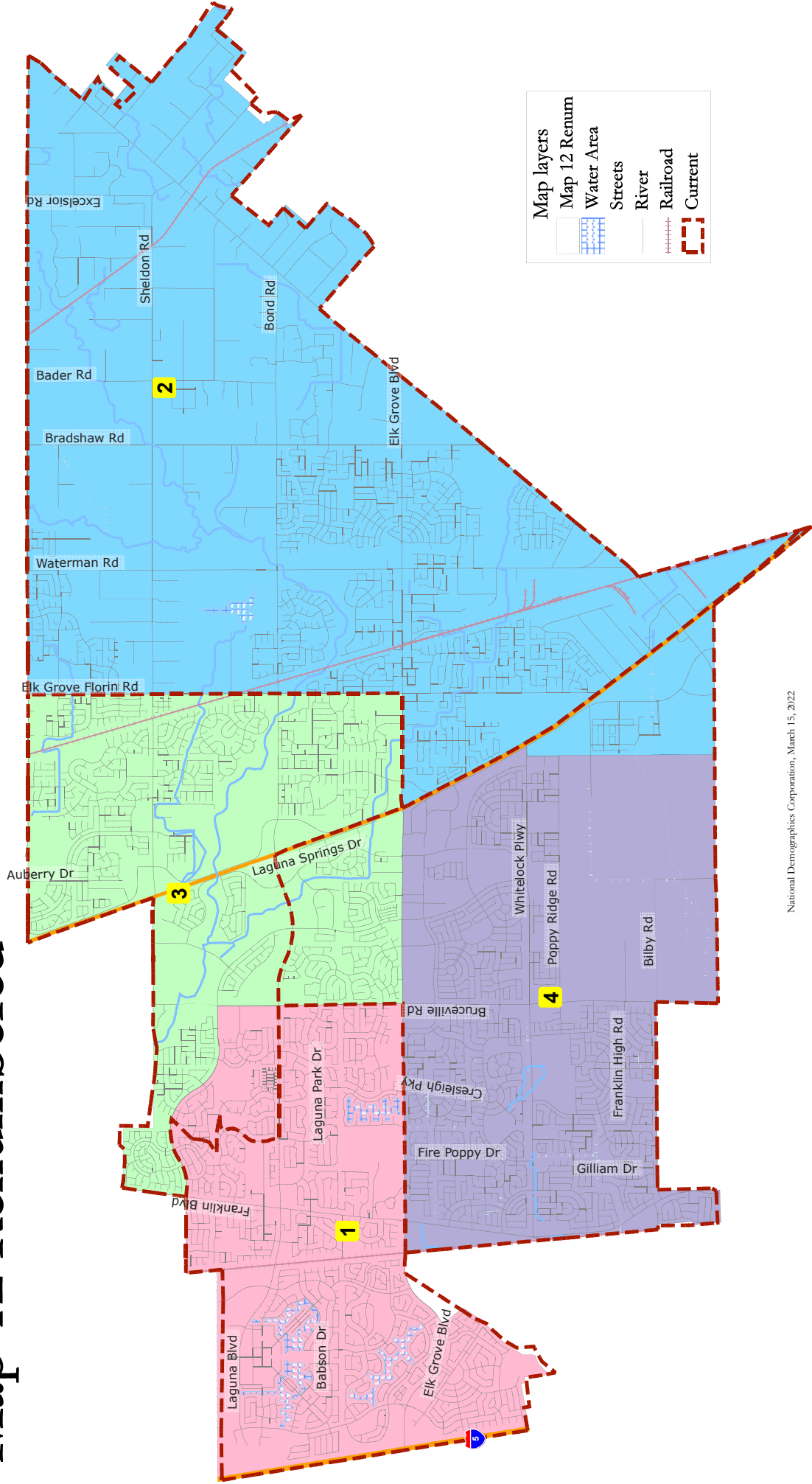
National Demographics Corporation, March 10, 2022

◆ 2021 CALIPER

Map 11						
District		1	2	3	4	Total
	Total Pop	44,999	44,376	43,941	43,246	176,562
	Deviation from ideal	858	235	-200	-895	1,753
	% Deviation	1.94%	0.53%	-0.45%	-2.03%	3.97%
Total Pop	% Hisp	20.7%	19%	20%	16%	19%
	% NH White	32%	38%	26%	21%	29%
	% NH Black	12%	8%	12%	12%	11%
	% Asian-American	30%	30%	35%	46%	35%
Citizen Voting Age Pop	Total	31,722	28,441	30,438	23,705	114,307
	% Hisp	17%	14%	19%	14%	16%
	% NH White	41%	50%	36%	29%	39%
	% NH Black	14%	10%	13%	14%	13%
	% Asian/Pac.Isl.	27%	24%	31%	40%	30%
Voter Registration (Nov 2020)	Total	28,609	27,867	26,254	24,245	106,975
	% Latino est.	18%	16%	19%	18%	18%
	% Spanish-Surnamed	16%	15%	18%	17%	17%
	% Asian-Surnamed	14%	15%	17%	21%	17%
	% Filipino-Surnamed	3%	3%	4%	6%	4%
	% NH White est.	50%	57%	43%	39%	47%
Voter Turnout (Nov 2020)	Total	24,328	23,536	21,347	20,166	89,377
	% Latino est.	17%	16%	19%	18%	17%
	% Spanish-Surnamed	16%	15%	17%	17%	16%
	% Asian-Surnamed	14%	14%	17%	20%	16%
	% Filipino-Surnamed	3%	3%	4%	6%	4%
	% NH White est.	50%	58%	44%	39%	48%
Voter Turnout (Nov 2018)	Total	17,384	15,771	14,355	13,143	60,653
	% Latino est.	16%	14%	17%	18%	16%
	% Spanish-Surnamed	15%	13%	16%	17%	15%
	% Asian-Surnamed	12%	9%	13%	17%	12%
	% Filipino-Surnamed	3%	2%	3%	4%	3%
	% NH White est.	53%	64%	49%	43%	53%
ACS Pop. Est.	Total	46,250	40,737	43,610	35,205	165,802
Age	age0-19	28%	27%	27%	32%	29%
	age20-60	53%	53%	54%	53%	53%
	age60plus	19%	19%	18%	15%	18%
Immigration	immigrants	23%	22%	25%	29%	24%
	naturalized	72%	71%	77%	75%	74%
Language spoken at home	english	68%	69%	64%	61%	66%
	spanish	8%	7%	11%	9%	9%
	asian-lang	16%	12%	18%	20%	16%
	other lang	8%	12%	7%	10%	9%
Language Fluency	Speaks Eng. "Less than Very Well"	12%	12%	15%	15%	13%
Education (among those age 25+)	hs-grad	40%	48%	47%	36%	43%
	bachelor	27%	23%	23%	30%	25%
	graduatedegree	15%	10%	8%	12%	11%
Child in Household	child-under18	39%	42%	38%	52%	42%
Pct of Pop. Age 16+	employed	63%	63%	66%	62%	64%
Household Income	income 0-25k	11%	11%	11%	9%	11%
	income 25-50k	12%	13%	13%	10%	13%
	income 50-75k	16%	14%	17%	13%	15%
	income 75-200k	49%	48%	51%	55%	51%
	income 200k-plus	11%	13%	7%	13%	11%
Housing Stats	single family	87%	90%	90%	95%	90%
	multi-family	13%	10%	10%	5%	10%
	rented	29%	21%	26%	24%	26%
	owned	71%	79%	74%	76%	74%
Total population data from the 2020 Decennial Census.						
Surname-based Voter Registration and Turnout data from the California Statewide Database.						
Latino voter registration and turnout data are Spanish-surname counts adjusted using Census Population Department undercount estimates. NH White and NH Black registration and turnout counts estimated by NDC. Citizen Voting Age Pop., Age, Immigration, and other demographics from the 2015-2019 American Community Survey and Special Tabulation 5-year data.						



# Map 12 Renumbered

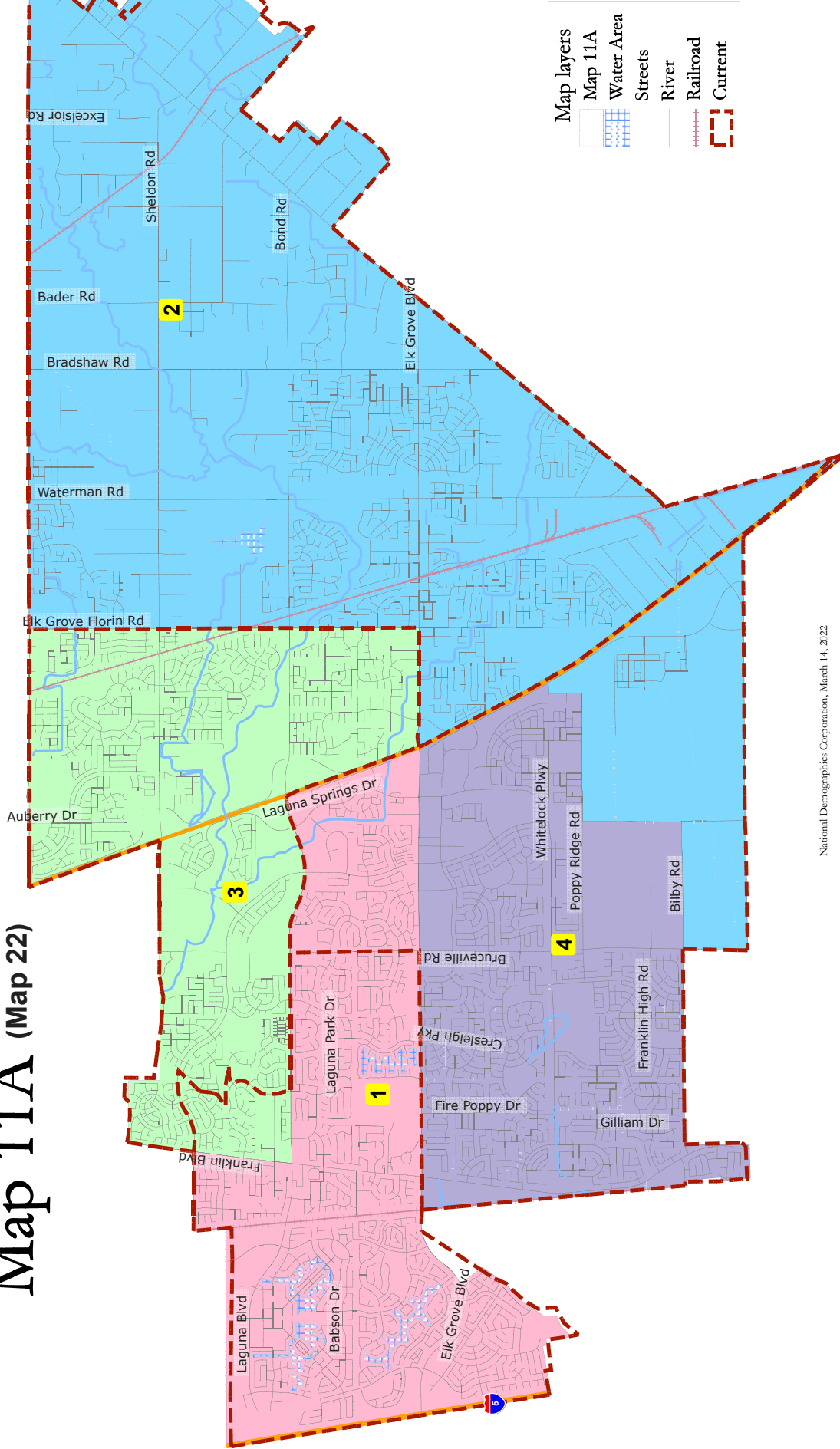


National Demographics Corporation, March 15, 2022

◆ 2021 CALIPER

Map 12 Renumbered						
District		1	2	3	4	Total
	Total Pop	44,354	41,882	44,586	45,740	176,562
	Deviation from ideal	213	-2,259	445	1,599	3,858
	% Deviation	0.48%	-5.12%	1.01%	3.62%	8.74%
Total Pop	% Hisp	20.9%	19%	20%	16%	19%
	% NH White	32%	39%	26%	20%	29%
	% NH Black	12%	7%	12%	12%	11%
	% Asian-American	30%	29%	36%	46%	35%
Citizen Voting Age Pop	Total	31,165	27,847	30,995	24,300	114,307
	% Hisp	17%	14%	18%	14%	16%
	% NH White	41%	50%	36%	30%	39%
	% NH Black	14%	10%	14%	14%	13%
	% Asian/Pac.Isl.	27%	24%	31%	40%	30%
Voter Registration (Nov 2020)	Total	28,416	26,399	26,447	25,713	106,975
	% Latino est.	18%	16%	18%	18%	18%
	% Spanish-Surnamed	17%	15%	17%	17%	17%
	% Asian-Surnamed	14%	14%	17%	21%	17%
	% Filipino-Surnamed	3%	3%	4%	6%	4%
	% NH White est.	50%	57%	43%	39%	47%
	% NH Black	15%	10%	18%	14%	14%
Voter Turnout (Nov 2020)	Total	24,155	22,292	21,520	21,410	89,377
	% Latino est.	18%	16%	18%	18%	17%
	% Spanish-Surnamed	16%	15%	17%	17%	16%
	% Asian-Surnamed	14%	13%	17%	20%	16%
	% Filipino-Surnamed	3%	3%	4%	5%	4%
	% NH White est.	50%	58%	44%	40%	48%
	% NH Black	15%	9%	17%	14%	14%
Voter Turnout (Nov 2018)	Total	17,305	15,216	14,434	13,698	60,653
	% Latino est.	16%	14%	17%	18%	16%
	% Spanish-Surnamed	15%	13%	16%	17%	15%
	% Asian-Surnamed	12%	9%	13%	17%	12%
	% Filipino-Surnamed	3%	2%	3%	4%	3%
	% NH White est.	54%	64%	49%	43%	53%
	% NH Black est.	15%	9%	18%	15%	14%
ACS Pop. Est.	Total	45,472	39,905	44,388	36,037	165,802
Age	age0-19	28%	27%	28%	32%	29%
	age20-60	53%	54%	54%	53%	53%
	age60plus	19%	19%	18%	15%	18%
Immigration	immigrants	22%	22%	25%	29%	24%
	naturalized	70%	71%	78%	75%	74%
Language spoken at home	english	68%	69%	64%	61%	66%
	spanish	9%	7%	9%	9%	9%
	asian-lang	16%	12%	18%	20%	16%
	other lang	7%	12%	9%	10%	9%
Language Fluency	Speaks Eng. "Less than Very Well"	11%	12%	15%	15%	13%
Education (among those age 25+)	hs-grad	40%	48%	47%	36%	43%
	bachelor	27%	23%	22%	29%	25%
	graduatedegree	16%	10%	8%	12%	11%
Child in Household	child-under18	39%	42%	39%	51%	42%
Pct of Pop. Age 16+	employed	64%	63%	65%	62%	64%
Household Income	income 0-25k	10%	11%	12%	9%	11%
	income 25-50k	12%	13%	14%	10%	13%
	income 50-75k	16%	14%	17%	13%	15%
	income 75-200k	52%	48%	48%	54%	51%
	income 200k-plus	10%	13%	8%	13%	11%
Housing Stats	single family	88%	90%	89%	94%	90%
	multi-family	12%	10%	11%	6%	10%
	rented	26%	22%	30%	24%	26%
	owned	74%	78%	70%	76%	74%
Total population data from the 2020 Decennial Census.						
Surname-based Voter Registration and Turnout data from the California Statewide Database.						
Latino voter registration and turnout data are Spanish-surname counts adjusted using Census Population Department undercount estimates. NH White and NH Black registration and turnout counts estimated by NDC. Citizen Voting Age Pop., Age, Immigration, and other demographics from the 2015-2019 American Community Survey and Special Tabulation 5-year data.						

# Map 11A (Map 22)



National Demographics Corporation, March 14, 2022

Map 11A (Map 22)

District		1	2	3	4	Total
	Total Pop	44,999	41,961	43,941	45,661	176,562
	Deviation from ideal	858	-2,180	-200	1,520	3,700
	% Deviation	1.94%	-4.94%	-0.45%	3.44%	8.38%
Total Pop	% Hisp	20.7%	19%	20%	16%	19%
	% NH White	32%	39%	26%	20%	29%
	% NH Black	12%	7%	12%	12%	11%
	% Asian-American	30%	29%	35%	46%	35%
Citizen Voting Age Pop	Total	31,722	27,863	30,438	24,283	114,307
	% Hisp	17%	14%	19%	14%	16%
	% NH White	41%	50%	36%	30%	39%
	% NH Black	14%	10%	13%	14%	13%
	% Asian/Pac.Isl.	27%	24%	31%	40%	30%
Voter Registration (Nov 2020)	Total	28,609	26,438	26,254	25,674	106,975
	% Latino est.	18%	16%	19%	18%	18%
	% Spanish-Surnamed	16%	15%	18%	17%	17%
	% Asian-Surnamed	14%	14%	17%	21%	17%
	% Filipino-Surnamed	3%	3%	4%	6%	4%
	% NH White est.	50%	57%	43%	39%	47%
	% NH Black	16%	10%	17%	14%	14%
Voter Turnout (Nov 2020)	Total	24,328	22,322	21,347	21,380	89,377
	% Latino est.	17%	16%	19%	18%	17%
	% Spanish-Surnamed	16%	15%	17%	17%	16%
	% Asian-Surnamed	14%	13%	17%	20%	16%
	% Filipino-Surnamed	3%	3%	4%	6%	4%
	% NH White est.	50%	58%	44%	40%	48%
	% NH Black	16%	9%	17%	14%	14%
Voter Turnout (Nov 2018)	Total	17,384	15,229	14,355	13,685	60,653
	% Latino est.	16%	14%	17%	18%	16%
	% Spanish-Surnamed	15%	13%	16%	17%	15%
	% Asian-Surnamed	12%	9%	13%	17%	12%
	% Filipino-Surnamed	3%	2%	3%	4%	3%
	% NH White est.	53%	64%	49%	43%	53%
	% NH Black est.	16%	9%	17%	15%	14%
ACS Pop. Est.	Total	46,250	39,931	43,610	36,011	165,802
Age	age0-19	28%	27%	27%	32%	29%
	age20-60	53%	54%	54%	53%	53%
	age60plus	19%	19%	18%	15%	18%
Immigration	immigrants	23%	22%	25%	29%	24%
	naturalized	72%	71%	77%	75%	74%
Language spoken at home	english	68%	69%	64%	61%	66%
	spanish	8%	7%	11%	9%	9%
	asian-lang	16%	12%	18%	20%	16%
	other lang	8%	12%	7%	10%	9%
Language Fluency	Speaks Eng. "Less than Very Well"	12%	12%	15%	15%	13%
Education (among those age 25+)	hs-grad	40%	48%	47%	36%	43%
	bachelor	27%	23%	23%	29%	25%
	graduatedegree	15%	10%	8%	12%	11%
Child in Household	child-under18	39%	42%	38%	51%	42%
Pct of Pop. Age 16+	employed	63%	63%	66%	62%	64%
Household Income	income 0-25k	11%	11%	11%	9%	11%
	income 25-50k	12%	13%	13%	10%	13%
	income 50-75k	16%	14%	17%	13%	15%
	income 75-200k	49%	48%	51%	54%	51%
	income 200k-plus	11%	13%	7%	13%	11%
Housing Stats	single family	87%	90%	90%	94%	90%
	multi-family	13%	10%	10%	6%	10%
	rented	29%	22%	26%	24%	26%
	owned	71%	78%	74%	76%	74%

Total population data from the 2020 Decennial Census.

Surname-based Voter Registration and Turnout data from the California Statewide Database.

Latino voter registration and turnout data are Spanish-surname counts adjusted using Census Population Department undercount estimates. NH White and NH Black registration and turnout counts estimated by NDC. Citizen Voting Age Pop., Age, Immigration, and other demographics from the 2015-2019 American Community Survey and Special Tabulation 5-year data.